

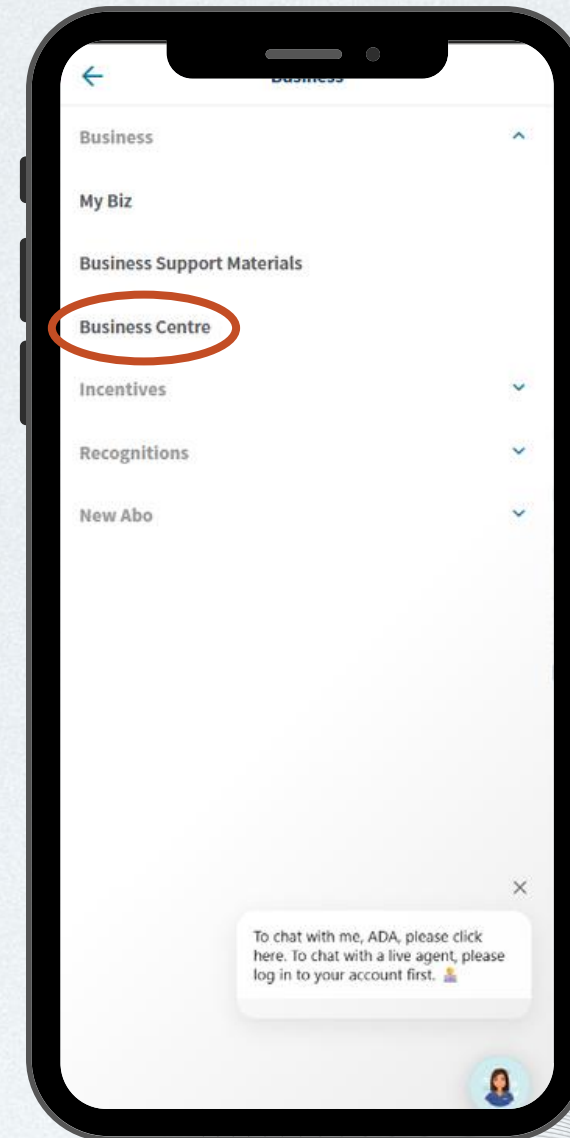
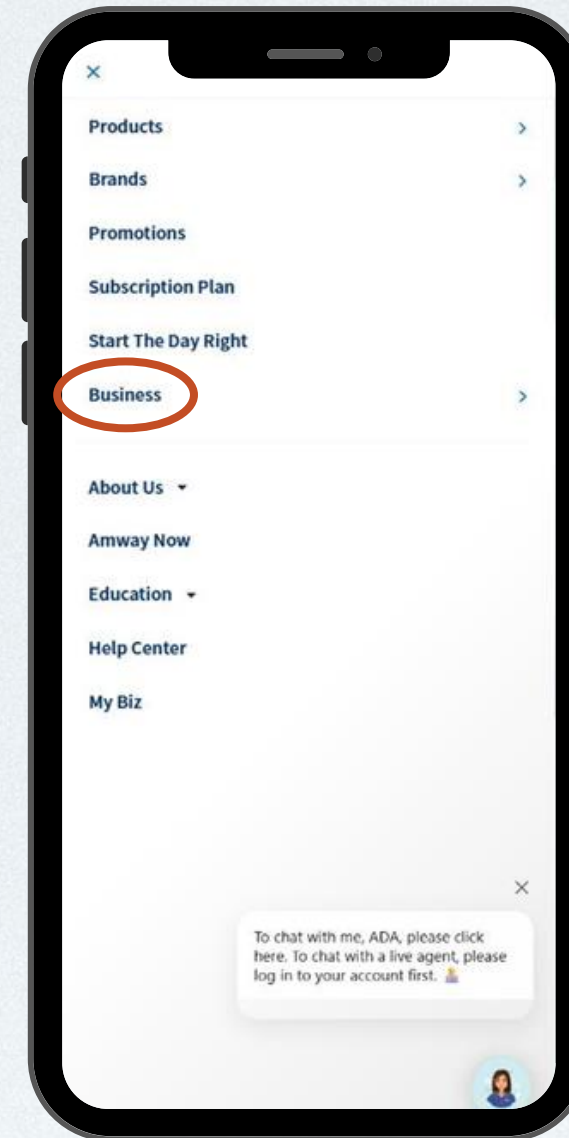
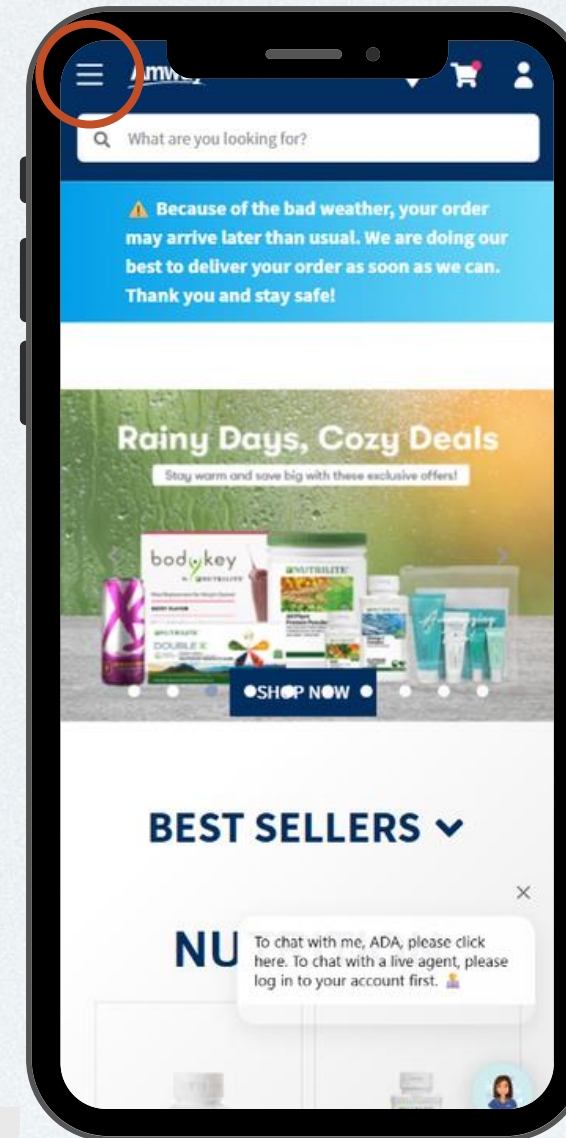
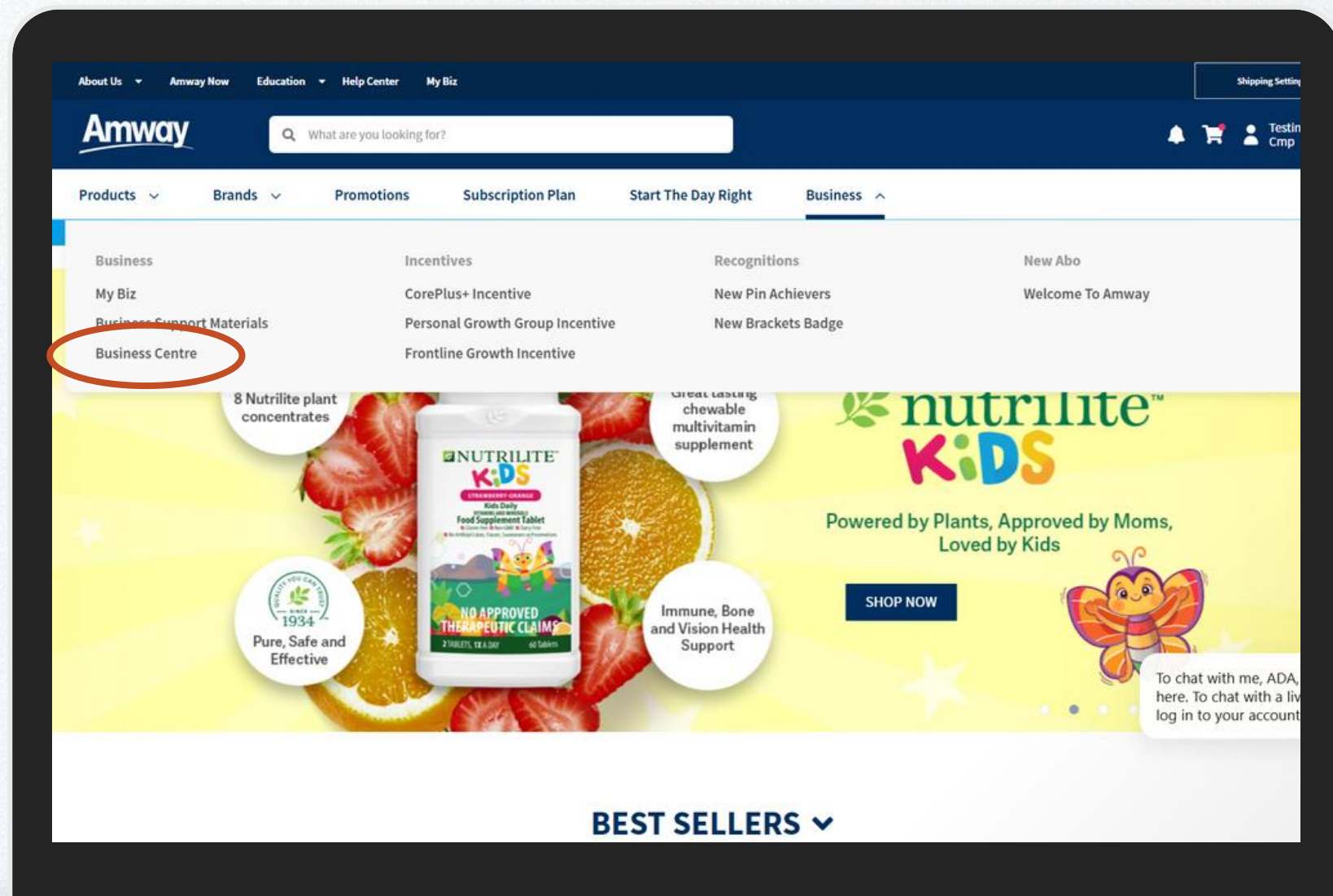
Commission Statement

 Tracking Progress Towards Success



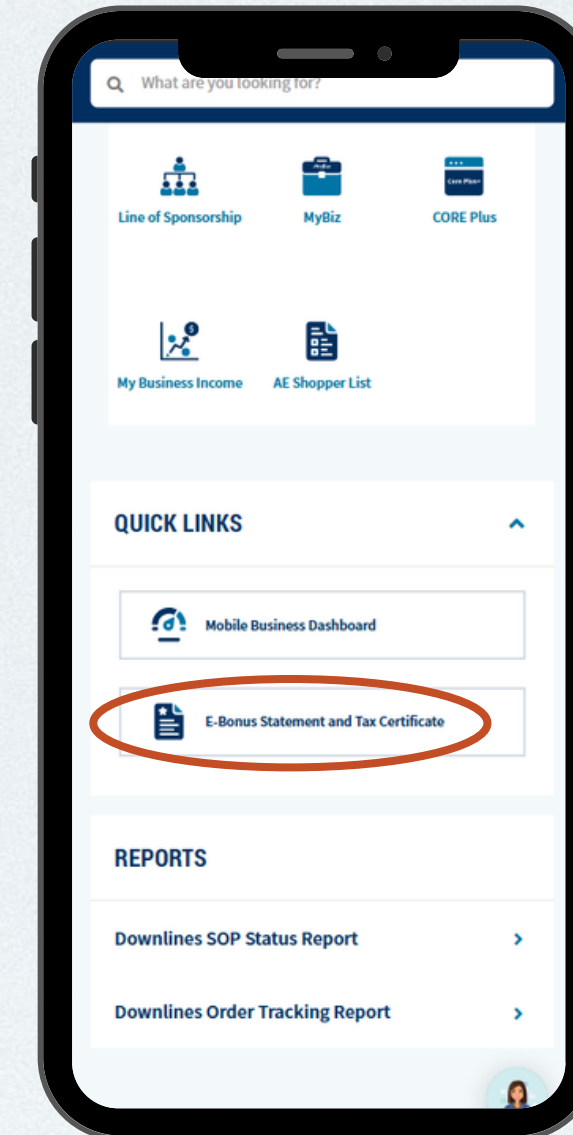
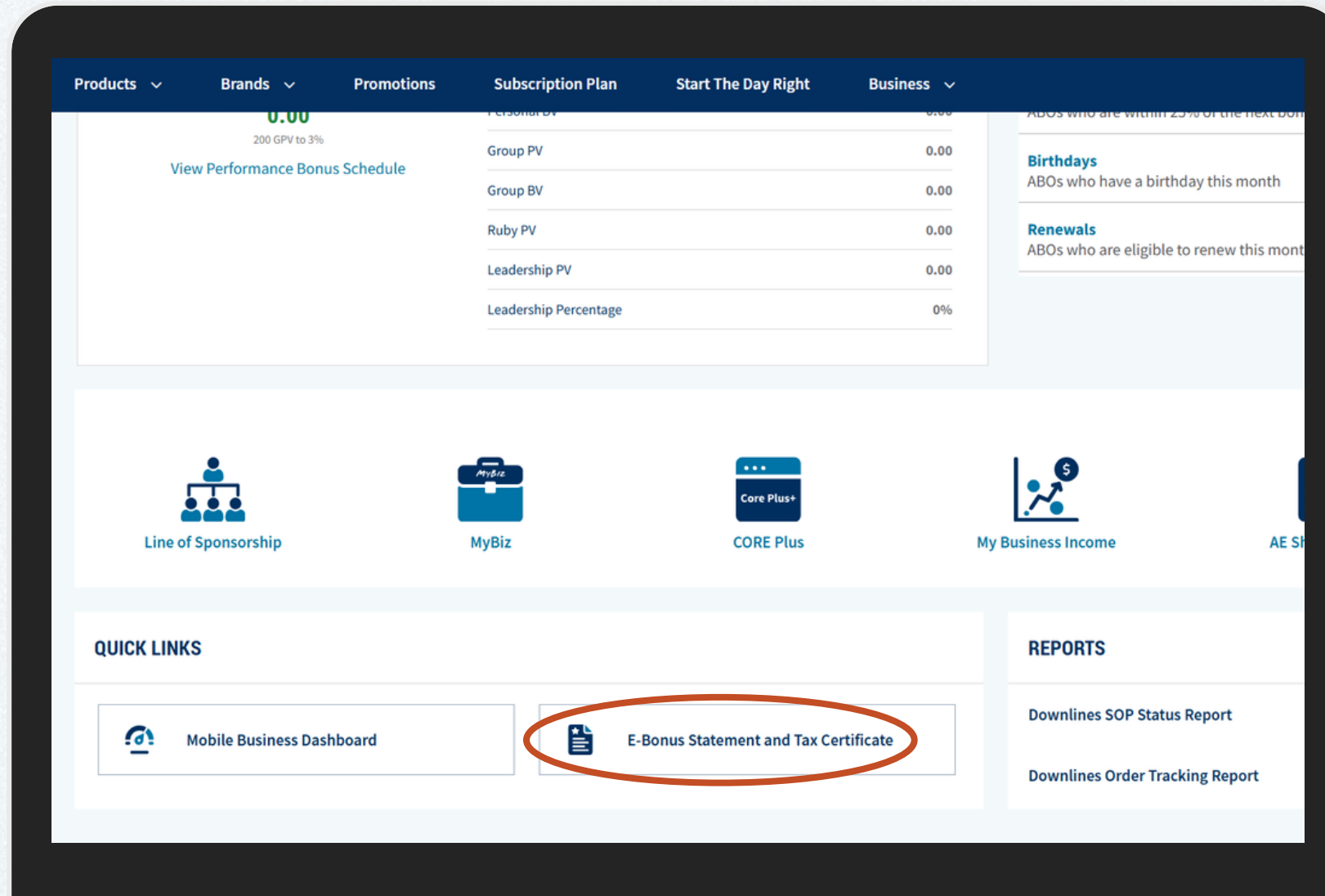
To access your **Commission Statement, E-Bonus Statement and Tax Certificate** on the Amway Philippines online store, follow these steps (these apply to both desktop and mobile views):

1. Log In: Go to the Amway Philippines website and sign in with your account credentials.
2. Open Your Dashboard: After logging in, access your dashboard by clicking on '**Business**' and then '**Business Centre**'.



To access your **Commission Statement, E-Bonus Statement and Tax Certificate** on the Amway Philippines online store, follow these steps (these apply to both desktop and mobile views):

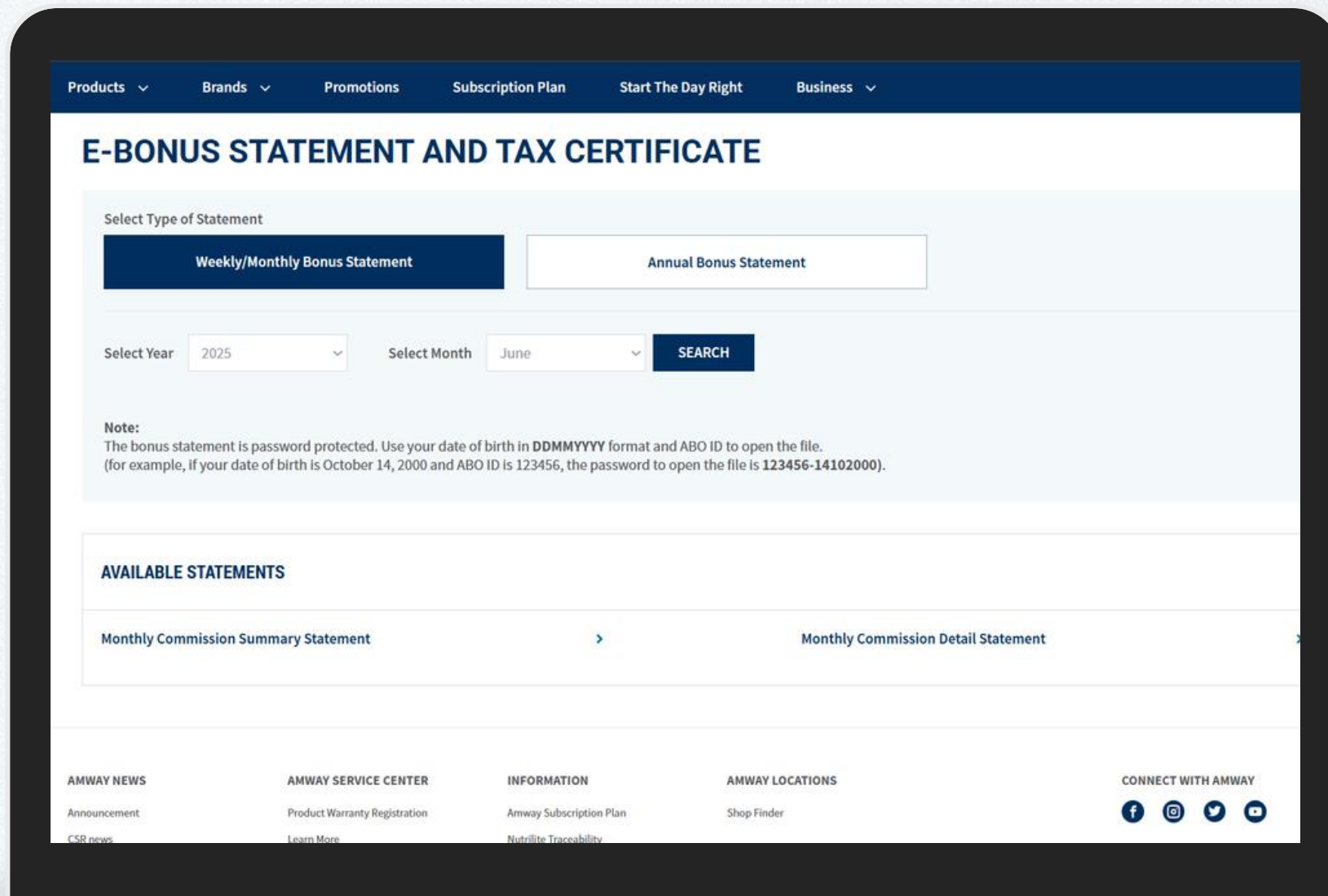
3. Go to Commission Statement: In your dashboard, select '**E-Bonus Statement and Tax Certificate**'.



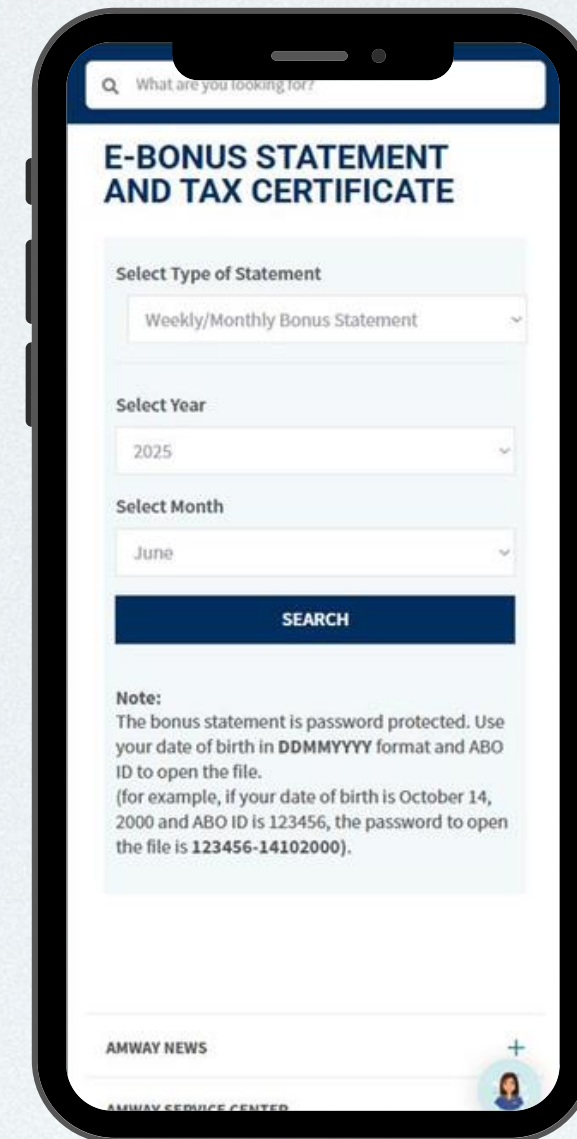
To access your **Commission Statement, E-Bonus Statement and Tax Certificate** on the Amway Philippines online store, follow these steps (these apply to both desktop and mobile views):

4. Choose a Date Range: Select the desired period for the statement (e.g., month, quarter, or year).

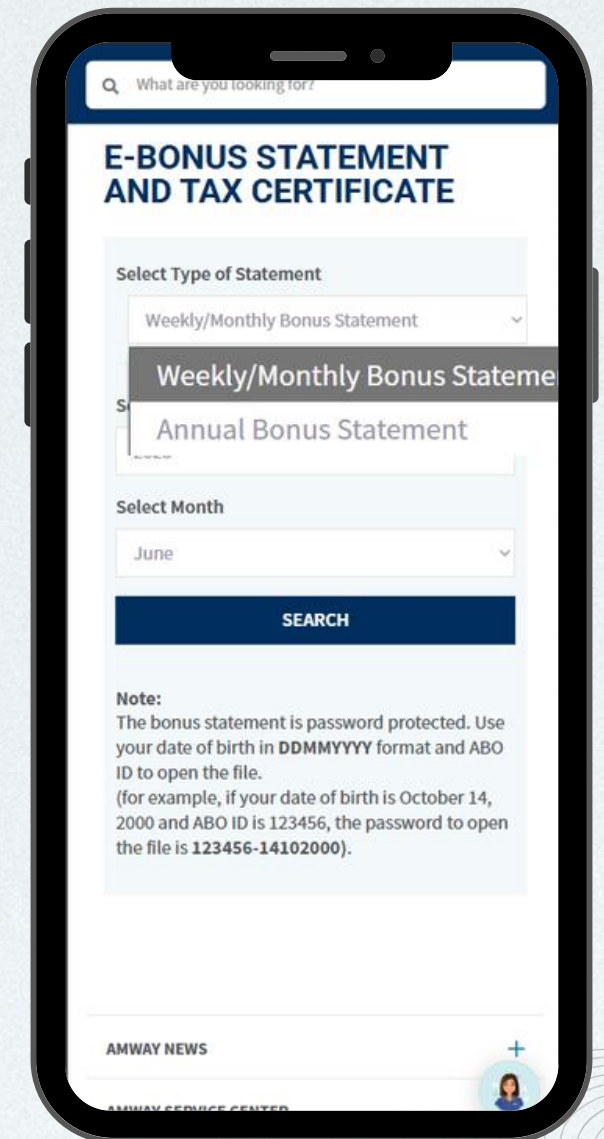
5. View or Download Your Statement: Once the date range is selected, you can view your statement on the site or download/print it for your records. Look for options like **"View," "Download,"** or **"Print."**



The desktop view of the Amway Philippines website displays the "E-BONUS STATEMENT AND TAX CERTIFICATE" page. The navigation bar includes links for Products, Brands, Promotions, Subscription Plan, Start The Day Right, and Business. The main content area features a "Select Type of Statement" section with two buttons: "Weekly/Monthly Bonus Statement" (highlighted in dark blue) and "Annual Bonus Statement". Below this, there are dropdown menus for "Select Year" (set to 2025) and "Select Month" (set to June), followed by a "SEARCH" button. A "Note" section provides password protection instructions, stating that the password is the user's date of birth in DDMMYYYY format followed by their ABO ID (e.g., 123456-14102000). The "AVAILABLE STATEMENTS" section lists "Monthly Commission Summary Statement" and "Monthly Commission Detail Statement". The footer contains links for Amway News, Amway Service Center, Information, Amway Locations, and a "CONNECT WITH AMWAY" section with social media icons.



The mobile view of the Amway Philippines website displays the "E-BONUS STATEMENT AND TAX CERTIFICATE" page. The navigation bar includes a search bar and links for Products, Brands, Promotions, Subscription Plan, Start The Day Right, and Business. The main content area features a "Select Type of Statement" section with a dropdown menu set to "Weekly/Monthly Bonus Statement". Below this, there are dropdown menus for "Select Year" (set to 2025) and "Select Month" (set to June), followed by a "SEARCH" button. A "Note" section provides password protection instructions, stating that the password is the user's date of birth in DDMMYYYY format followed by their ABO ID (e.g., 123456-14102000). The footer contains links for Amway News, Amway Service Center, Information, Amway Locations, and a "CONNECT WITH AMWAY" section with social media icons.



The mobile view of the Amway Philippines website displays the "E-BONUS STATEMENT AND TAX CERTIFICATE" page. The navigation bar includes a search bar and links for Products, Brands, Promotions, Subscription Plan, Start The Day Right, and Business. The main content area features a "Select Type of Statement" section with a dropdown menu set to "Weekly/Monthly Bonus Statement". Below this, there are dropdown menus for "Select Year" (set to 2025) and "Select Month" (set to June), followed by a "SEARCH" button. A "Note" section provides password protection instructions, stating that the password is the user's date of birth in DDMMYYYY format followed by their ABO ID (e.g., 123456-14102000). The footer contains links for Amway News, Amway Service Center, Information, Amway Locations, and a "CONNECT WITH AMWAY" section with social media icons.



Sample Statement: Weekly Statement

Retail Margin Weekly Statement				
ABO NO. 1234			Page :	1
Surname, First name			Date :	12/3/25
Address			Time :	3:21:06
Date Paid	Amt	WTH	Net Payment	Pay Method
03/13/2025	932.15	-93.22	838.93	Direct Deposit
Order/Return Number	Order/Return Date	Order/Return Amount		Ordering ABO
7 xxxx	03/11/2025	364.29		1234
7 xxxx	03/11/2025	567.86		1234

Retail Margin Weekly Statement				
ABO NO. 1234			Page :	1
Surname, First name			Date :	12/3/25
Address			Time :	3:21:06
Date Paid	Amt	WTH	Net Payment	Pay Method
03/13/2025	932.15	-93.22	838.93	Direct Deposit
Order/Return Number	Order/Return Date	Order/Return Amount		Ordering ABO
7 xxxx	03/11/2025	364.29		1234
7 xxxx	03/11/2025	567.86		1234

Sample Statement: **Summary Statement**

Summary of Statements		Page :	1
For the Month of June 2025		Date :	5/8/25
		Time :	3:17:27

DD: Sponsor:

ABO NO. 1234	Statement Recap Philippines	Amount
Surname, First name	Personal Performance Bonus:	PHP 19,008.68
	Differential Bonus:	PHP 39,047.73
	Foster Bonus:	PHP 40,591.61
	Bonus Subtotal:	PHP 98,648.02
	Total Taxable Bonus:	PHP 98,648.02
	Gross Bonus:	PHP 98,648.02
	Withholding Tax.	PHP -4,932.40
	TOTAL:	PHP 93,715.62
	Net Payment	
	Currency/Amount:	PHP 93,715.62
	Method:	DIRECT DEPOSIT

=====

End of Report

AMWAY 1/ 1

[illegible]



Sample Statement: Detail Statement

<

Amway Philippines, L.L.C. Invoice Summary Statement For the Month of May 2025 Currency: PHP Philippines Peso				

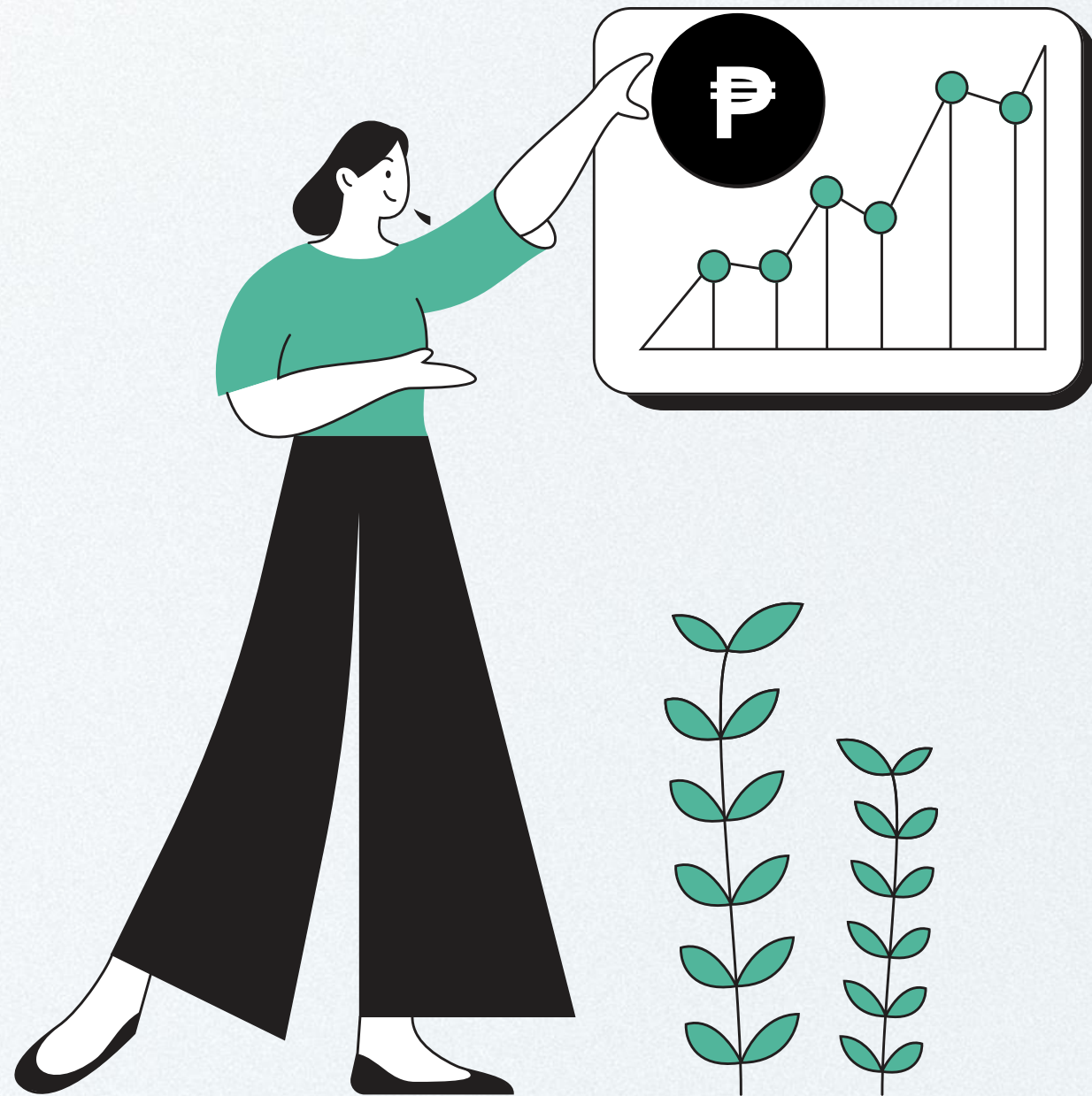
IBO: 1234				
Surname, First name				
Address				

Reference		Point	Business	A/R
/Invoice#	Description	Value	Volume	A/P

7		17.45	900.00	0.00
7		111.82	5765.63	0.00
7		109.70	5657.16	0.00
7		114.85	5922.32	0.00
7		262.64	13544.21	0.00
7		90.77	4680.81	0.00
Totals		707.23	36470.13	0.00

End of Report				

Understanding Your Amway Commission Statements



The **Weekly Statement** helps you track progress in real time and take action mid-month.



The **Summary Statement** tells you what you earned for the month.



The **Detail Statement** shows you how you earned it and where to focus for future growth.