



# Helping People Live Better Lives

**Amway** was founded in 1959 by Rich DeVos and Jay Van Andel and revolutionized the business model known as direct selling. Based in Ada, Michigan, U.S., on the same property where our company was founded, our global footprint stretches across six continents with a presence in more than 100+ countries and territories.

Our mission continues to be guided and inspired by our Founders' Fundamentals: Freedom, Family, Hope and Reward. These fundamentals keep us moving forward while still holding true to what matters most.

More than one million Amway Business Owners (ABOs) are the heart and soul of our company. Their success is integrated into everything we do. We're here to support their goals, whether it's extra cash, financial flexibility or personal freedom.

Our ABOs are supported by more than 16,000 employees who work in hundreds of locations around the world. We offer incredible, cross-cultural career opportunities for some of the best talent around the globe. From farming to finance, technology to teaching, our international team helps build better lives for themselves, their customers and their families.

We are the world's no. 1 direct selling company, according to the Direct Selling News Global 100. Today, we're still disrupting the retail industry by empowering Amway Business Owners to be leaders in social commerce.

# Amway in the Philippines

Amway Philippines is a local affiliate of the Amway Corporation. Having first opened in 1997, we have expanded our presence by building our own experience centers called My Amway Place, located in Luzon, Visayas and Mindanao, to support our ABOs.

Amway in the Philippines is an active member of organizations such as the American Chamber of Commerce (AmCham), Direct Selling Association of the Philippines (DSAP), Health and Dietary Supplement Association of the Philippines (HADSAP) and Chamber of Cosmetics Industry of the Philippines (CCIP) and have developed strong ties with the Food and Drug Administration (FDA) and the Department of Science and Technology-Food and Nutrition Research Institute (DOST-FNRI).



## High Quality Products, Environmental Leader

Amway puts a prime not just on our products and our people, but also our planet. Our company has been committed to environmental sustainability since our inception in 1959. Our very first product, the Liquid Organic Cleaner (LOC), is one of the first concentrated, biodegradable cleaning product of its kind, made with ingredients that had a reduced impact to the environment.

Amway always seeks new and innovative ways to take care of the Earth while providing high-quality products. Among our primary efforts include:

1. Reducing waste in our systems and processes, which means we use less water and lessen greenhouse gas emissions while also reducing the amount of materials we use in our products and packaging.
2. Creating sustainable innovations both in our business practices and our operations, such as sustainable agriculture and using alternative energy in our operations.

In every endeavor linked to sustainability, Amway will be leading with its collective conscience. Because our planet and its people depend on it.





## AMWAY PROMISE™

Since day one, Amway's commitment to people has been unwavering. Our success is dependent on the success of our distributors and the confidence people have in our products.

That's why we firmly believe, as a values-based, family-owned company, we must protect those who represent us or purchase from us.

Satisfaction will always be our goal, and protection – our promise.

---



### LOW-COST, LOW-RISK OPPORTUNITY

Zero purchase requirements and minimal sign-up fees for new Amway business owners.

We believe that everyone deserves the opportunity to get ahead. That's why we promise to always provide a low-cost opportunity with minimal risk.

With a registration fee of only Php1,000, you can become an Amway Business Owner (ABO) and enjoy the benefits we offer to our distributors – purchase products at distributor price, earn through retailing and bonuses, get invites on trainings and events, and more. You get your money's worth because this sign-up cost includes a sales kit containing a member application form, member ID, Product Catalog, Rules of Conduct book and Php1,000 Product eCoupon that you can use on your first purchase with us.

#### **ABO Right To Cancel – Cooling Off Period**

Within 14 days after the date of registration, an ABO can cancel his or her registration and receive a refund of the entire registration fee paid with no questions asked. Just visit any Amway Shop and look for the assigned Customer Service Officer or call our contact center at #AMWAY (#26929) to assist you on the process of cancellation and refund of registration fee.

In addition, ABOs may receive a refund for all Amway products purchased within 14 days after the date of registration. The refund will be for the amount actually paid for the product, including taxes, shipping and handling charges for shipments to and from the ABO. If the product has already been delivered, the ABO may return the product that is unopened and re-sellable as new within 14 days from the date of purchase. Just visit any Amway Shop and look for the assigned Customer Service Officer or call our contact center at #AMWAY (#26929) to assist you on the process of product refund.

#### **ABO Resignation**

In any case that an ABO wants to resign from their Amway business within one hundred (100) days of joining, they are entitled to a refund of the Sales Kit less product(s) not returned and bonus paid. Just provide a letter of resignation with the ABO I.D. card and the Sales Kit. The cost of returning the Sales Kit will be paid by the resigning ABO. Reimbursement will be made in that month's Performance Incentive payment to the resigning ABO. Payment will be credited within the month thru their respective bank account.

#### **Returned Product from a Resigning ABO**

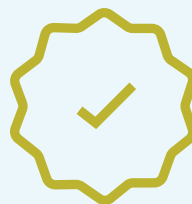
Amway Philippines will refund a resigning ABO for any current product returned in a saleable condition. Current product does not include products which are NLA (No Longer Available), damaged products or products which are not supplied or endorsed by Amway Philippines. A letter of resignation, the Amway ABO I.D. Cards, and a fully completed Return Merchandise Authorization should accompany any returned product from a resigning ABO. Payment will be included in the next payment schedule (15th day).

We're only satisfied when you are. If you do not get what you expected from your Amway opportunity or an Amway product – let us know, and we'll work tirelessly to make sure you're 100% satisfied.

We also stand behind our products with the Amway 100-day, 100% Customer Satisfaction Guarantee. If for any reason you are not completely satisfied with our products, you may return them at any LBC Branch or any Amway Shop within 100 days from purchase date for an exchange or refund of the product price and applicable tax.

**Please Note:**

- This guarantee does not apply to products which have been intentionally damaged or misused.
- eSpring™ Water Purifier is not included in this return policy. It is supported by a separate warranty program.



## 100% SATISFACTION GUARANTEE

Helps ensure satisfaction with Amway™ products or business opportunity.

### CHANNELS OF PRODUCT RETURN

#### I. via Amway Shops



**Step 1:**  
Fill out the Return Merchandise (RM) Form. You may download it at [www.amway.com.ph](http://www.amway.com.ph)



**Step 2:**  
Bring the product(s) you wish to return along with the completed Return Merchandise (RM) Form and original invoice to any Amway Shop.



**Step 3:**  
Hand it over to the shop representative for return processing.

**Return Option:**

1. For full refund - Payment will be credited to your account on the 15th of the following month.  
*Example: A product return that takes place on November 7 will be refunded on December 15 for payment.*
2. For product exchange – After a successful return, your preferred product replacement will be processed.

#### II. via LBC Branches



**Step 1:**  
Fill out the Return Merchandise (RM) Form. You may download it at [www.amway.com.ph](http://www.amway.com.ph)



**Step 2:**  
Bring the product(s) you wish to return, along with the completed Return Merchandise (RM) Form and photocopy of invoice to your nearest LBC Branch and ship to My Amway Place, 2F Kentek Building, 828 A. Arnaiz Avenue, San Lorenzo Village, Makati City, 1223.



**Step 3:**  
Complete the LBC form and submit it together with the parcel containing the product(s), RM Form and photocopy of invoice to an LBC representative.

**Please Note:**

Include the Amway Account Number 100889 and SAP Customer ID 6000000178 on the LBC Form. If you send a representative to submit the return on your behalf, please provide an authorization letter and ABO number.



**Step 4:**  
Once Amway receives your return parcel, we will contact you via phone to confirm receipt – this will occur within 5 business days from the date your return package was submitted to LBC.

**Return Option:**

1. For full refund - Payment will be credited to your account on the 15th of the following month.  
*Example: A product return that takes place on November 7 will be refunded on December 15 for payment.*
2. For product exchange – After a successful return, Amway Contact Center will call to verify your preferred product replacement. You can also order it online ([www.amway.com.ph](http://www.amway.com.ph)) and use your account receivable (AR) amount as payment.

**Please note**

1. LBC is our partner courier for returned products to Amway. This service is available at all LBC branches nationwide.
2. You do not need to pay anything at LBC. Amway will shoulder the freight cost for this type of transaction.



**Step 5:**  
You may contact our customer hotline #AMWAY (#26929) to check the status of your return.





## WARRANTY PROGRAMS

Protection at point of sale

### Our Warranty

Amway Philippines offers a two-year or five-year limited warranty for eSpring™ Water Purifier and a one-year limited warranty on eSpring™ UV Carbon Filter Replacement.

This Limited Warranty covers the eSpring™ Unit, including the power adapter, filter cartridge, tubing and diverter. To know more, check page 14 of the eSpring™ Owner's Manual.

We're confident in the quality of the durable product that we offer. If your product has an issue, we provide service, repair and warranty programs that allow you to easily address any concerns that you may have.

### A Dependable Company Standing Behind a Reliable Product

Since 1959, Amway has garnered a successful and enviable track record among companies, and that has been accomplished partly because our consumers and Amway Business Owners alike know that Amway firmly stands behind every single product it builds and sells. eSpring™, with the years of research and development that have been poured into their design and manufacture, is no exception.

We know you'll have questions along the way and we have the answers. For Amway Business Owners, Amway is committed to providing top-notch service, whether face-to-face, on the phone, or online. We're here for you.

### My Amway Place

Do you have any queries while visiting any of our shops? Don't fret and just look for the designated Customer Service Officers.

### Amway Contact Center

There is only one contact number you need to remember in order to reach us: #AMWAY (#26929). Our customer service team will be happy to assist you anytime between 8am to 6pm, Monday to Saturday, excluding holidays.

### Amway PH Facebook Messenger

Are you online and needing some information about products or your business? Send a message to our customer support in Facebook Messenger and we'll get back to you in time.



## CUSTOMER SERVICES (#26929)

Assistance for all product and business opportunity related inquiries

We promise to be transparent and forthcoming in all communications related to our service and protection offerings.

Get to know more about our business and its opportunity through these available resources:

- Amway Central App in IOS & Android



- Amway website: [www.amway.com.ph](http://www.amway.com.ph)
- Amway Official Social Media Channels:



Amway - @amwayph\_official  
Artistry - @artistryph  
XS - @xsnation\_ph



## THE RIGHT TO KNOW

Knowledge is power



Amway Philippines



@amwayPHofficial



Amway Philippines

# How to Order



## SHOPS

Our stores are strategically located throughout the Philippines so you can experience Amway and talk to our staff about our products' features and benefits.



## ONLINE

Visit [amway.com.ph](http://amway.com.ph) to order your products faster, keep track of your points, and get updates!



## #AMWAY HOTLINE (#26929)

Enjoy same-day delivery services and free delivery in coverage areas for a minimum purchase!



## DELIVERY CONDITIONS

1. Cut-off for same day delivery is 11:00 am. Orders placed after cut-off time will be delivered on the next working day.
2. FOR METRO MANILA AND SOME AREAS IN LAGUNA, CAVITE, BULACAN AND RIZAL\*: Free delivery with a minimum purchase of P1,000.00 and a P100.00 delivery fee for purchases below P1,000.00.

\*Cabuyao Laguna, Calamba Laguna, Silang Area, Naic Cavite, Tanza Cavite, Tartaria Cavite, Trece Martires Cavite, Cavite City, Teresa Rizal, Morong Rizal, Binangonan Rizal, Baras Rizal, Tanay Rizal, San Mateo Rizal, Rodriguez Rizal, Meycauayan Bulacan, Marilao Bulacan, Guiguinto Bulacan, Bocaue Bulacan, Balagtas Bulacan: for next day delivery

3. FOR PROVINCIAL AREAS: Free delivery with a minimum purchase of P5,000.00 and a P300.00 delivery fee for purchases below P5,000.00.

\* Lead time is 5 working days

## 4. PAYMENT OPTIONS

- Cash on Delivery (COD) nationwide (effective Q4 2019) - Php 200.00 collection fee applies to non-serviceable areas.
- Credit Card on Delivery for Metro Manila



# Amway brands

Our global portfolio can be found wherever Amway operates. These are the brands upon which Amway Business Owners build their businesses.

A global leader in health and wellness for more than 50 years, Amway makes quality products that make life better. Our world-class team of scientists, engineers, and product development experts are the force behind Amway's nutrition, beauty, and home products, which millions of people around the world use.



## NUTRITION

Nutriline™ brand supplements help fill nutritional gaps in people's diets. We grow, harvest, and process plants on our own certified organic farms, where our strict quality standards guarantee that only the highest-quality plants are used to process ingredients for our products.



## HOME CARE

Our eSpring™ water purifiers are on the cutting edge of clean-water technology. It's scientifically tested and third-party certified to help provide you with clean, safe, and better-tasting water at your fingertips, while Amway Home™ gives you phosphate-free laundry detergent and environmentally sensitive cleaning products that are safe for the whole family.



## ENERGY

More than just an energy drink, XS™ is designed to help deliver positive energy to fuel your everyday.



## BEAUTY & PERSONAL CARE

The Artistry™, G&H™, Satinique™ and Glister™ brands help bring together beauty and skincare solutions that are infused with nature, perfected by science, and personalized for each individual's needs.



## AGRICULTURE

Amway Philippines has created a line of agricultural products that can provide the needs of our farmers so they can meet the required nutrition for their crops to produce bountiful and quality harvest.

# Nutrilite Story

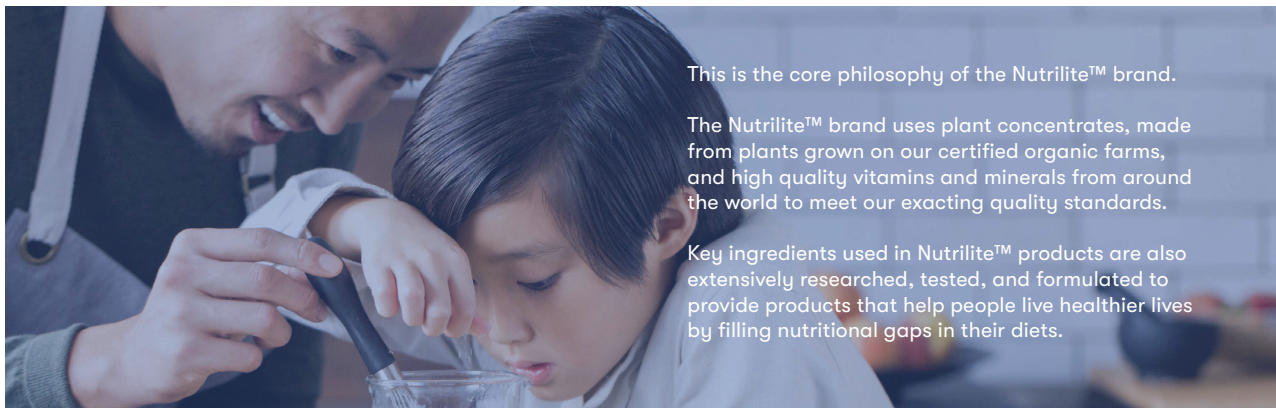


**Nutrilite™** is the only global vitamin and mineral brand to grow, harvest, and process plants on our own certified organic farms\*.

When you take Nutrilite™ supplements, you're getting more than vitamins and minerals – you're also getting phytonutrients, the beneficial plant compounds that you may not be getting enough of if you don't eat the recommended daily servings of fruits and vegetables.

\*SOURCE: Euromonitor International Limited, Protein supplements category, 2018

## BEST OF NATURE, BEST OF SCIENCE



This is the core philosophy of the Nutrilite™ brand.

The Nutrilite™ brand uses plant concentrates, made from plants grown on our certified organic farms, and high quality vitamins and minerals from around the world to meet our exacting quality standards.

Key ingredients used in Nutrilite™ products are also extensively researched, tested, and formulated to provide products that help people live healthier lives by filling nutritional gaps in their diets.



## NUTRILITE™

### OUR BRAND PROMISE

Nutrilite™ is committed to provide consumers with pure, safe and effective supplements.



#### Purity

No matter where our ingredients are grown, we can trace what is and what is not in our supplements. Nutrilite™ organic farms and our NutriCert™ certified partner farms provide rigorous quality control from field to production to ensure we are using the purest ingredients with no contamination.



#### Safety

Trust comes from knowing supplements have undergone the most rigorous safety testing available. All ingredients are subject to strict quality standards. We check and recheck, performing more than 500,000 tests and evaluations on our products every year.



#### Effectiveness

Nutrilite™ goes deeper than anyone in the industry to ensure our customers receive the most effective supplements possible. We create products that deliver nutrients at levels demonstrated by science to offer health benefits. We guarantee the potency of our supplements, ensuring the effectiveness for the life of the product.

Source: <https://www.amway.com/nutrition/nutrilite>

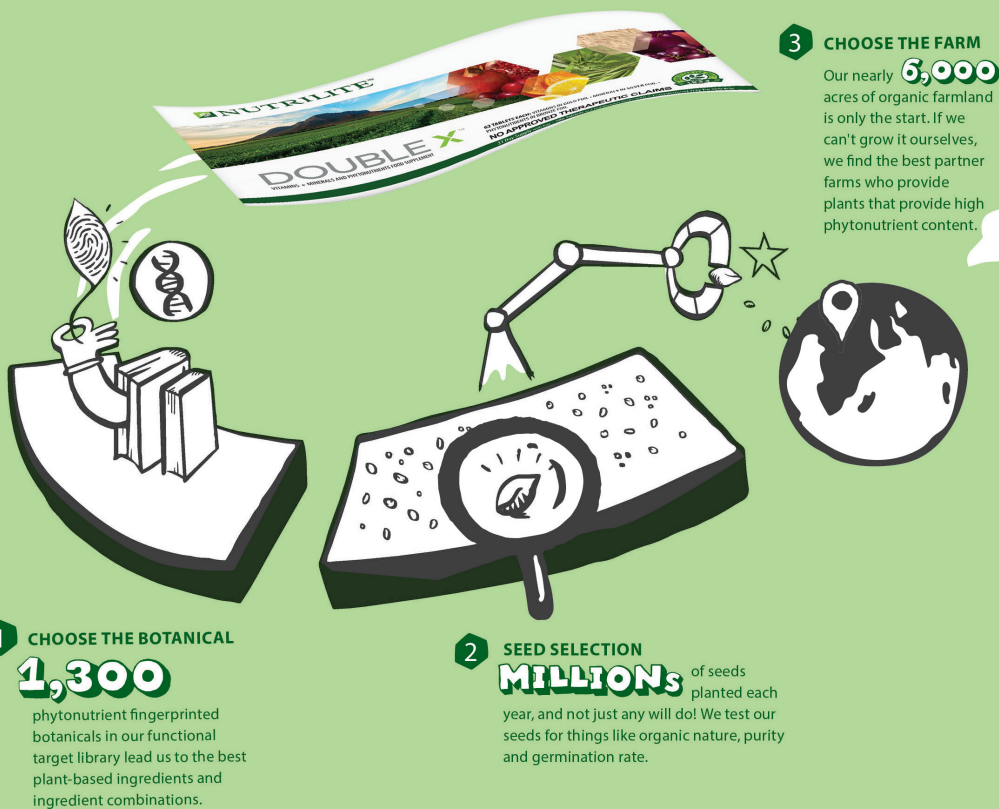






# GO Behind THE Label

Follow our outrageously detailed 9-step traceability process that brings you the purest, safest and most effective Nutralite supplements.



\*Information above is reflective of Nutralite™ owned farms.

Pure Safe Effective

**4 GROW**

Every botanical has a birth certificate. And each is grown 99% weed free, with no chemical pesticides.

**5 HARVEST**

We move plants within as little as **20** minutes from field to on-site dryers to ensure the highest phytonutrient levels.

**7 MANUFACTURING**

We conduct **500,000** quality checks on our ingredients each year.

**6 EXTRACTION**

Skin, seeds, roots, leaves... we concentrate or dry the parts of the plant that give us the highest level of phytonutrients.

**9 YOU**

Our traceability process begins and ends with you, giving you pure, safe and effective supplements.

**8 PACKAGING**

Shake, squeeze, twist, x-ray. We test our packages more than **30,000** times each year.

**NUTRILITE™**

Exclusively from **Amway**

## ESSENTIALS: Healthy Foundation

# DOUBLE X™

**Nutrilite™ Double X** is the only all-in-one dietary food supplement that contains 12 essential vitamins, 9 essential minerals, and 19 phytonutrient-rich plant concentrates from five different colors of fruits and vegetables, bringing you optimal health, naturally.

### THE POWER OF DOUBLE X

- Helps give you energy so you can do more in a day
- Helps strengthen your body's natural defenses against germs and other invisible attacks
- Helps keep you healthy so you can get more out of every stage of your life



**Vitamins:** A, Ascorbic Acid, Beta-Carotene, Biotin, D3, d-Alpha-Tocopheryl Acid Succinate, Folic Acid, Niacinamide, Pyridoxine, Hydrochloride, Riboflavin, Thiamine Mononitrate

**Minerals:** Calcium Carbonate, Chromium Chloride, Copper Gluconate, Magnesium Oxide, Manganese Sulfate, Molybdenum Yeast, Potassium Iodide, Sodium Selenite, Zinc Ozide

**Phytonutrients:** Acerola Concentrate, Alfalfa Concentrate, Apple Extract Powder, Asparagus Powder, Broccoli Dehydrate, Citrus Bioflavonoid Dehydrate, Grape Extract, Kale, Lutein Ester, Lycopene, Oregano Extract, Pomegranate Extract, Prune Extract, Rosemary Extract, Sage Extract, Wild Blueberry Powder



### WHY CHOOSE DOUBLE X?

- Power-packed with vitamins, minerals, and plant concentrates, supporting your healthy and active lifestyle.
- No artificial preservatives, flavors, or color.
- Comes in a convenient packaged supply that you can bring anywhere.
- Doubles the opportunity for your body to absorb the beneficial nutrients.
- Comes in vacuum-sealed packaging to ensure product quality and integrity.



## ESSENTIALS: Healthy Foundation

# Nutrilite™ Double X

### OPTIMIZE OVERALL HEALTH.

Double X is the number one selling multivitamin multi-mineral with phytonutrients from five phytonutrient color groups\*.

All-in-one dietary food supplement that contains 12 essential vitamins, 9 essential minerals and 19 phytonutrient-rich plant concentrates from the five different colors of fruits and vegetables, bringing you to optimal health, naturally.



**Recommended Usage:** For adults, consume one vitamin tablet, one mineral tablet and one phytonutrient tablet two times daily with meals. Children under 12 years of age, pregnant women or nursing mothers, or anyone with a medical condition should consult with a physician before using this product.



#### 31-day supply

62 vitamin tablets in gold foil  
62 mineral tablets in silver foil  
62 phytonutrient tablets in bronze foil  
SKU #102884  
SRP: 3,820.00  
P6078B2621Y29352

#### 62-day supply

124 vitamin tablets in gold foil  
124 mineral tablets in silver foil  
124 phytonutrient tablets in bronze foil  
SKU #102883  
SRP: 6,495.00  
P10343B4460Y49952



\*SOURCE: Euromonitor International Limited, 2017.

## Nutrilite™ All Plant Protein Powder

OPTIMIZE BODY FUNCTIONS.

Nutrilite™ is the world's #1 selling protein supplements brand\*.

Made from wheat, pea and soy, one 10g serving provides 8g of protein with a balance of all nine essential amino acids your body needs.

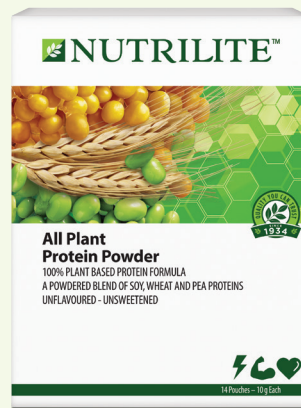
- Contains high protein quality, equivalent PDCAAS score of 1.
- Blends easily into your diet and mixes well with your favorite recipes.
- Provides all natural, no cholesterol protein.
- Provides satiety and is a healthy alternative to traditional sources of protein.



**Recommended Usage:** Add one scoop (10g) or one pouch to a 225ml glass of any beverage once or several times per day. Children under 12 years of age, pregnant women or nursing mothers, or anyone with a medical condition should consult with a physician before using this product.



450 g/canister  
 SKU #110415  
 SRP: 1,930.00  
 P2869B1324Y14852



14 pouches / box  
 SKU #110817  
 SRP: 795.00  
 P1201B545Y6102

\*SOURCE: Euromonitor International Limited, Protein supplements category, 2018.

\*Protein Digestibility-Corrected Amino Acid Score (PDCAAS) is a global standard established by the World Health Organization, with a score of 1.0 representing the highest score possible for a quality protein source.



ESSENTIALS: Healthy Foundation

## Nutrilite™ Protein Mix Berries Flavour

UNLOCK THE POWER OF PROTEIN.



Nutrilite™ is the world's #1 selling protein supplements brand\*.

A well-balanced and high-quality protein drink mix that provides 8g of protein with essential amino acids, 250mg of calcium and 30mg of vitamin C per serving (23.5g).

- Specially formulated with soy protein isolate, an excellent source of natural protein.
- Contains high protein quality, equivalent PDCAAS score of 1\*.
- Has a natural berry flavor and contains Nutrilite™'s exclusive Tropical Fruit Concentrate for a great tasting nutritional drink for the whole family!

500 g/canister  
SKU #100325  
SRP: 1,990.00  
P2869B1365Y15302



**Recommended Usage:** Add 2 level scoops (23.5g) into 200ml of cool water. Stir until dissolved.

\*SOURCE: Euromonitor International Limited, Protein supplements category, 2018.

\*Protein Digestibility-Corrected Amino Acid Score (PDCAAS) is a global standard established by the World Health Organization, with a score of 1.0 representing the highest score possible for a quality protein source.

HEALTH AND WELLNESS

15

## Nutrilite™ Soy Protein Drink Mix Chocolate Flavor

UNLOCK THE POWER OF PROTEIN.

Nutrilite™ is the world's #1 selling protein supplements brand\*.

A chocolate flavoured instant powdered protein drink that contains 10g of protein with essential amino acids and is fortified with 140mg of Calcium per serving.

- Contains high protein quality
- Has a delicious chocolate flavor for a great tasting nutritional drink for the whole family!
- Easily hydrates in hot or cold water



**Recommended Usage:** Add 2 level scoops (24.2g) into 200ml of cool water. Stir until dissolved.

500 g/canister  
SKU #117580  
SRP: 1,990.00  
P2869B1365Y15302

\*SOURCE: Euromonitor International Limited, Protein supplements category, 2018.

PRODUCT CATALOGUE



### ESSENTIALS: Healthy Foundation

## Nutriline™ Daily

**YOUR DAILY DOSE OF VITAMINS AND MINERALS.**

One tablet a day gives you 11 essential vitamins plus 8 essential minerals.



**Recommended Usage:** One tablet daily with a meal. Children under 12 years of age, pregnant women or nursing mothers, or anyone with a medical condition should consult with a physician before using this product.

60/bottle  
SKU #AA0119  
SRP: 1,435.00  
P2029B987Y11052



HEALTH AND WELLNESS

16



## Nutriline™ Omega 3 Complex

**OPTIMIZE HEART HEALTH.**

Natural fish oil supplement rich with omega-3 fatty acids which promote heart health and play an important role in brain and eye health. Each softgel provides 180mg of EPA and 120mg DHA, plus d-Alpha Tocopherol for nutritional fortification and helps prevent oxidation of omega-3 fatty acids.

Current research also suggests that omega-3 fatty acids may be beneficial in the maintenance of cell membranes and help maintain healthy cholesterol levels.



**Recommended Usage:** One softgel daily preferably with a meal. Children under 12 years of age, pregnant women or nursing mothers, or anyone with a medical condition should consult with a physician before using this product.

90/bottle  
SKU #A4298  
SRP: 1,470.00  
P1925B1010Y11302

## Nutriline™ Concentrated Fruits and Vegetables

**CONCENTRATED NUTRITION.**

Just two tablets of Nutrilite™ Concentrated Fruits and Vegetables contain some of the most researched plant nutrients, which provides equivalent amounts of phytonutrients from fruits and vegetables.

Get lycopene for cardiovascular and prostate health, ellagic acid for colon health and DNA, hesperidin for a healthy circulatory system, and EGCG (Epigallocatechin gallate) for heart and circulatory health.



**Recommended Usage:** Take one tablet twice per day with meals. Children under 12 years of age, pregnant women or nursing mothers, or anyone with a medical condition should consult with a physician before using this product.



60/bottle  
SKU #100296  
SRP: 1,885.00  
P2474B1295Y14502



PRODUCT CATALOGUE

## ESSENTIALS: Single Vitamins



### Nutrilite™ B Vitamins

**BLOCK FATIGUE BEFORE IT BLOCKS YOU.**

Packed with natural spirulina, Nutrilite™ B Vitamins contains all eight essential B Vitamins including biotin that is used by the body to help fight fatigue.

90/bottle  
SKU #110181  
SRP: 700.00  
P991B480Y5352



**Recommended Usage:** One tablet daily for adults, preferably with a meal.

### Nutrilite™ Acerola C

**SUPPORTS THE EVERYDAY READINESS OF OUR BODY'S NATURAL DEFENSES.**

Contains an exclusive blend of acerola cherries, one of nature's richest sources of vitamin C, as well as lemon bioflavonoid complex that provides phytonutrient benefits.



**Recommended Usage:** Chew one tablet daily. Children under 12 years of age, pregnant women or nursing mothers, or anyone with a medical condition should consult with a physician before using this product.

110/bottle  
SKU #A4237  
SRP: 890.00  
P1169B610Y6852



### Nutrilite™ Lecithin-E with Honey

**BE HEALTHY WITHIN.**

Provides a supply of Vitamin E and Lecithin from soybean oil, which is an important antioxidant that combats free radicals and helps maintain good cell health. Lecithin is also a natural emulsifier of fatty foods.

110/bottle  
SKU #101315  
SRP: 1,010.00  
P1408B690Y7752



**Recommended Usage:** Two tablets daily for adults. Tablet may be chewed or swallowed with a glass of water. Children under 12 years of age, or anyone with a medical condition should consult with a physician before using this product.



## ESSENTIALS: Single Vitamins

### Nutriline™ Multi-Carotene

PROVIDES HARD-TO-GET CAROTENES.

Contains an exclusive blend of concentrates that provides a range of carotenoids found in fruits and vegetables namely alpha carotene, beta carotene, lutein and zeaxanthin, which help promote optimal health.



**Recommended Usage:** One softgel daily with water for adults.

90/bottle  
SKU #117304  
SRP: 1,845.00  
P2544B1270Y14202



HEALTH AND WELLNESS

18



### Nutriline™ Cal Mag D

BUILD STRONG AND HEALTHY BONES.

Nutriline™ Cal Mag D puts hard-to-get calcium within easy reach to build a lifetime of strong, healthy bones. It contains vitamin D for more effective calcium absorption, and is made with natural source nutrients such as calcium and magnesium.



250/bottle  
SKU #117147  
SRP: 1,255.00  
P1779B862Y9652

**Recommended Usage:** One tablet, twice daily, preferably with meals. Children under 12 years of age, pregnant women or nursing mothers, or anyone with a medical condition should consult with a physician before using this product.

### Nutriline™ Iron-Folic Plus

PROTECTION FOR YOUR CHILD BEARING YEARS.

Iron supports various aspects of the immune system and plays an important role in a wide range of biological processes. A healthy diet with adequate amounts of folic acid may reduce a woman's risk of having a child with brain or spinal cord defects.

Nutriline™ Iron-Folic Plus contains ferrous fumarate, one of the best forms of iron combined with folic acid with the exclusive Nutriline™ Spinach Concentrate.



**Recommended Usage:** For pregnant and breastfeeding women, take two tablets per day with a meal. To supplement dietary intake of iron and folic acid, take 1 tablet a day. Children under 12 years of age, or anyone with a medical condition should consult with a physician before using this product.



120/bottle  
SKU #A5924  
SRP: 825.00  
P1088B565Y6352

**ESSENTIALS: Healthy Aging**



**Nutrilite™ M Boost™**

**WHEN YOU REMEMBER TOO LITTLE OR FORGET TOO MUCH.**

Guaranteed by a special patented process, Nutrilite™ M Boost™ contains a unique Cistanche tubulosa extract that helps support improvement in memory, focus and recall over a longer period of time.

60/bottle  
SKU #111106  
SRP: 2,900.00  
P4402B1991Y22302



**Recommended Usage:** Two tablets daily for adults, preferably with meals. Children under 12 years of age, or anyone with a medical condition should consult with a physician before using this product.

**Nutrilite™ ClearGuard™**

**CLEAR NASAL PASSAGES.**

This exclusive, natural formula helps support clear nasal passages in three days or less based on the conducted clinical trial.

- Contains a unique blend of acerola cherries, cinnamon, and Spanish needles to help reduce nasal discomfort.
- Balanced histamine production for any season.



**Recommended Usage:** Two tablets three times daily, preferably with meals. Continue to take two tablets three times a day as needed for up to 12 weeks at a time. Children under 12 years of age, or anyone with a medical condition should consult with a physician before using this product.

180/bottle  
SKU #102735  
SRP: 2,830.00  
P3894B1940Y21752



**Nutrilite™ Hair, Skin and Nails Complex**

**BEAUTY FROM THE INSIDE OUT.**

In this hectic world, everything from pollution to stress to UV rays adds to the challenge of keeping hair, skin and nails in optimum condition. Nutrilite™ Hair, Skin and Nails Complex contains Biotin, the water-soluble B vitamin, which research suggests may help alleviate nail brittleness, promote healthy hair and improve skin condition; and Acerola Cherry containing a high concentration of vitamin C that is essential for the growth of skin and hair.

90/bottle  
SKU #100305  
SRP: 1,105.00  
P1521B760Y8502



**Recommended Usage:** One tablet daily, preferably with meals. Children under 12 years of age, or anyone with a medical condition should consult with a physician before using this product.



TARGETED: Healthy Aging

## Nutriline™ Garlic

HELP MAINTAIN A HEALTHIER HEART.

Studies show that garlic has shown to be effective in maintaining blood lipids and blood pressure levels that are healthy, when used as part of a diet low in fat and cholesterol. Nutrilite™ Garlic is also enteric-coated to minimize garlic odor and to protect active components from acidic pH during transit through the stomach.



**Recommended Usage:** Two tablets daily for adults, preferably with meals. Children under 12 years of age, or anyone with a medical condition should consult with a physician before using this product.

120/bottle  
SKU #100566  
SRP: 1,405.00  
P1936B965Y10802



HEALTH AND WELLNESS

20



## Nutriline™ Vision Health Brand

MAINTAIN HEALTHY VISION.

Contains a combination of lutein, black currant, Vitamin A, and bilberry to support healthy vision function, visual acuity and healthy blood vessels in the eye. This anti-oxidant rich formula also helps protect eyes against free radical damage to promote good eye health.



62/bottle  
SKU #104144  
SRP: 2,210.00  
P2899B1520Y17002

**Recommended Usage:** Two tablets once daily with food for adults. Children under 12 years of age, or anyone with a medical condition should consult with a physician before using this product.

## Nutriline™ Nutri Fiber Blend Chewable Tablets

PROVIDES A BALANCED BLEND OF FIBER THAT AIDS IN DIGESTION.

Leading health organizations recommend that adult individuals consume 30-40g of dietary fiber each day for optimal digestion. Nutrilite™ Nutri Fiber Blend Chewable Tablets contain an exclusive blend of insoluble and soluble dietary fibers from 13 natural sources. Its natural orange cream flavour makes it easier to enjoy the health benefits of a diet rich in fiber.



**Recommended Usage:** Chew 1-3 tablets per day for adults. Drink at least a full glass (250ml) of liquid with each tablet. Children under 12 years of age, pregnant women or nursing mothers, or anyone with a medical condition should consult with a physician before using this product.



60/bottle  
SKU #104402  
SRP: 1,995.00  
P2744B1370Y15352



PRODUCT CATALOGUE

**TARGETED: Healthy Aging**



150/bottle  
SKU #100108  
SRP: 1,860.00  
P2444B1275Y14302

## Nutrilite™ Glucosamine

**SUPPORT HEALTHY JOINTS NATURALLY.**

Contains a combination of special extracts to promote healthy connective tissues and overall joint comfort

- Glucosamine hydrochloride to help improve joint function and mobility and repair degraded cartilage.
- Boswellia that naturally acts as anti-inflammatory to help reduce joint discomfort.
- Acerola cherries for an extra boost of Vitamin C.



**Recommended Usage:** Two capsules daily for adults, preferably with meals. Children under 12 years of age, or anyone with a medical condition should consult with a physician before using this product.

## Nutrilite™ Saw Palmetto and Nettle Root Blend

**KEEP YOUR PROSTATE WORKING.**

Contains a special blend of herbal extracts and concentrates that helps maintain a healthy prostate and normal urinary flow\* and may assist in the management of medically diagnosed benign prostate hypertrophy.

*\*The Urological Sciences Research Foundation used this unique blend of plant extracts in one of the longest, best-controlled botanical studies in the U.S, which confirmed the benefits of saw palmetto with nettle root and pumpkin seed oil in maintaining a healthy prostate.*



**Recommended Usage:** One softgel three times a day, preferably with meals.



100/bottle  
SKU #117303  
SRP: 2,895.00  
P4100B1987Y22252

**TARGETED: Healthy Kids**

## Nutrilite™ Kids Vitamins and Minerals Chewable Tablet

**HELPS SUPPORT IMMUNITY.**

Chewable and great-tasting tablets that provide 11 vitamins, beta carotene, 4 minerals and phytonutrients from acerola concentrate and tropical fruit concentrates to keep your kids healthy and strong.

✔ Recommended Usage: For children under 7 years who can safely chew and swallow, chew one tablet daily with a meal. For 7-9 year old children, chew 2 tablets daily with meals.

90/bottle  
SKU #AA0144  
SRP: 1,270.00  
P1667B870Y9752



HEALTH AND WELLNESS

22

## Nutrilite™ Kids Chewable Concentrated Fruits and Vegetables

**ADDRESS GAPS IN NUTRITION.**

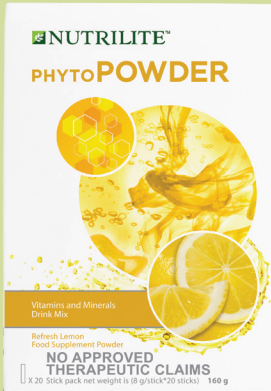
Sweet and tangy chewable tablets that deliver naturally-sourced key phytonutrients.



30/bottle  
SKU #102179  
SRP: 1,260.00  
P1730B865Y9702

✔ Recommended Usage: Chew 1 tablet daily, preferably with a meal.

**TARGETED: Vitality**



## Nutrilite™ PHYTOPOWDER™ Refresh Lemon

This convenient, great-tasting refreshing drink mix is packed with essential vitamins and phytonutrients perfect for your busy lifestyle.

- It contains an exclusive Nutrilite™ phytonutrient blend (lemon, pineapple, sea buckthorn and pomegranate concentrates) and natural lemon citrus flavors.
- Includes fiber, vitamin C and a balanced blend of vitamin B that are necessary for the formation of energy in the body.

20 sticks/box  
SKU#: 118895  
SRP: PHP 1,110.00  
P1574B763Y8552



**Recommended Usage:** Mix one stick in 250ml water.

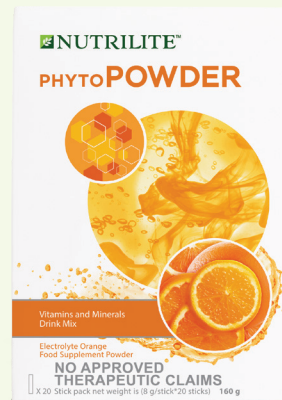
## Nutrilite™ PHYTOPOWDER™ Electrolyte Orange

This convenient, great-tasting refreshing drink mix is packed with essential vitamins, minerals and phytonutrients perfect for your busy lifestyle.

- Designed to replenish electrolytes and contains 30mg of potassium and 80mg of sodium.
- Contains 50mg of the Red Orange Complex ingredient, a phytonutrient that helps reduce oxidative stress and developed from blood oranges grown exclusively in the fertile Mount Etna region in Sicily.



**Recommended Usage:** Mix one stick in 250ml water.



20 sticks/box  
SKU#: 118894  
SRP: PHP 1,110.00  
P1574B763Y8552

**TARGETED: Weight Management**



## Nutrilite™ Carb Blocker

**LOSE CALORIES, NOT NUTRIENTS.**

Provides an exclusive blend of natural plant extracts designed to inhibit the digestion of both sugars and starches that may help you lose weight, without depriving your body of vitamins, minerals and fibers.

90/bottle  
SKU #100193  
SRP: 2,470.00  
P3395B1695Y19002



**Recommended Usage:** 1-3 tablets daily with a carbohydrate-containing meal, but not more than 9 tablets a day for adults.

## Nutrilite™ Chrompic Extra

**METABOLIZE TO DROP A SIZE.**

Unique blend that combines chromium and vanadium with a special blend of herbs to help your body metabolize carbohydrates, fats and protein.



**Recommended Usage:** 1 capsule with a large glass of water three times daily, 30-45 minutes before meals.

120/bottle  
SKU #A8600  
SRP: 2,620.00  
P3604B1800Y20152



## Nutrilite™ GreenTrim

**TRIM DOWN TO YOUR IDEAL WEIGHT.**

Formulated with GreenSelect® Phytosome green tea extract, designed to help the body lose weight when combined with a low-calorie diet and regular physical activity.

GreenSelect® Phytosome green tea extract is formulated in lecithin and delivered as a unique phospholipid complex which may help improve the absorption of EGCG in your body.



60/bottle  
SKU #117085  
SRP: 2,300.00  
P3260B1580Y17702



**Recommended Usage:** 1 tablet once a day for adults.



## BodyKey™ by Nutrilite™ Meal Replacement Shake

NUTRITIONAL & DELICIOUS.

This rich shake will satisfy your hunger while providing you with protein, 5g of dietary fiber, 12 vitamins and 13 minerals your body needs.

- Contains no artificial flavors, colors, sweeteners or preservatives.
- Flavors and texture developed based on the exclusive BodyKey taste-mapping technology.



**Recommended Usage:** Combine powder with 250ml of cold skim (non-fat) dairy milk. Shake/stir well.

14 pouches/box  
SKU #116467  
SRP: 2,255.00  
P3357B1549Y17352



14 pouches/box  
SKU #116466  
SRP: 2,255.00  
P3357B1549Y17352

# Beauty and Personal Care



## INFUSED WITH NATURE

From Nutrilite™ organic farms and every corner of the world, we curate the most effective, powerful and pure ingredients that deliver clinically proven results.



## PERSONALIZED FOR YOU

We have analyzed the faces of more than 32,000 women around the world to develop custom beauty solutions that meet every individual's concerns.

## PERFECTED BY SCIENCE

For more than 50 years, Artistry™ scientists have combined ideal ingredients in precise amounts, using exclusive technologies and formulations that raise the bar for performance and safety.

## ARTISTRY™

The **Artistry™** brand infuses the best of science with the best of nature to create personalized beauty solutions for every skin type across the world.

## SATINIQUE

**Satinique™** hair care formulas blend botanicals with important nutrients to take your hair to its full potential.

## G&H

**G&H™** body care products are grounded in holistic skin health. We use ingredients that are thoughtfully grown, sourced and blended in our formulas for healthy-looking, balanced skin.

## glister™

**Glister™** oral care products are formulated and tested to promote healthy teeth and gums so you can smile confidently.

ARTISTRY™ SKIN CARE: Special Care



## Artistry™ Cream Makeup Remover

A lightly textured formula that gently and effectively cleanses skin to remove long-lasting and transfer-resistant makeup.

- Leaves skin clean, smooth and moisturized.
- Deeply cleanses without stripping natural oils and moisture from skin.
- Non-greasy formula.
- Suitable for all skin types (oily, dry and combination).

125 ml  
SKU #117653  
SRP: 1,350.00  
P1911B926Y10352



**Recommended Usage:** Apply to dry skin. Rinse or tissue off.

## Artistry™ Eye & Lip Makeup Remover

A non-greasy, daily use makeup remover that gently removes lip and eye area makeup, while leaving the lips feeling moisturized and the eye area feeling conditioned.

- Fortified with a blend of specially selected extracts, humectants, and emollients that are gentle to eyes and lips, yet effective in removing makeup.
- Suitable for all skin types (sensitive, oily, dry, combination).



**Recommended Usage:** Apply to cotton pad and press against the eye and lip area for a few seconds to allow the remover to work. Do not tug or rub and do sweeping motions until makeup is gone.

120 ml  
SKU #117652  
SRP: 1,105.00  
P1564B758Y8502



ARTISTRY™ SKIN CARE: Intensive Skin Care Collection



## Artistry™ Intensive Skincare Advanced Skin Refinisher

This intensive yet gentle “Smart Pore Eraser” sweeps away dullness, tightens pores, and makes skin softer, smoother, and more even-textured with every use.

- Contains an exclusive blend of optical diffusers and natural ingredients.
- Silky-smooth serum that glides easily over skin.

30 ml  
SKU #117842  
SRP: 3,360.00  
P5090B2308Y25852



**Recommended Usage:** Gentle and safe enough to use two times per day after cleansing and toning, every day.

## Artistry™ Supreme LX Regenerating Cream



50 ml  
SKU #118184  
SRP: 17,770.00  
P26960B12205Y136702

This luxurious and advanced face cream helps transform and regenerate your skin's youthful appearance by addressing all visible signs of aging in a unique and technologically advanced way.

- Increases skin energy index by 68 times over baseline.
- Powerful antioxidants help protect skin against age-accelerating free radicals.
- Skin instantly becomes softer, smoother, radiant and re-energized, while the appearance of fine lines is diminished.
- Optical diffusers help improve the look of skin tone and skin clarity.
- Suitable for all skin types, including sensitive skin



**Recommended Usage:** Apply to cleansed and toned face and neck in an upward and outward motion. In the morning, follow with UV protection.

## Artistry™ Supreme LX Regenerating Eye Cream

A rich, luxurious, emollient cream which offers 360° of comprehensive anti-aging benefits for the entire eye area, resulting in younger looking, more radiant eyes.

- Instantly, the eye area becomes softer, smoother, and more luminous with reduced visible fine lines and dark under-eye circles.
- Eye area appears less fatigued, more well-rested, and vibrant.
- Non-comedogenic, dermatologist and allergy tested.
- Works well as a makeup base.
- Optical diffusers help improve the look of skin tone and skin clarity.
- Suitable for all skin types, including sensitive skin.



**Recommended Usage:** Apply after cleansing and toning before face cream. Apply to entire eye area (upper and lower) morning and evening. Use a gentle circular tapping motion, moving from the inside eye area outward and around.

15 ml  
SKU #118185  
SRP: 7,825.00  
P11876B5375Y60202





## Artistry™ Youth Xtend Rich Cleansing Foam

A rich, foaming cleanser that effectively removes traces of makeup and pore-clogging impurities, leaving skin feeling clean, soft and hydrated.

- Transforms into a thick, luxurious lather that gently and thoroughly cleanses the skin.
- Patented Oat Extract helps skin achieve a more radiant look.
- Contains African Baobab fruit extract which helps condition and soothe skin.

125 ml  
SKU #113801  
SRP: 2,475.00  
P3643B1700Y19052



### Recommended Usage:

Dampen skin with fresh warm water. Work cleanser into thick lather. Apply to face in a circular massaging motion, avoiding direct contact with eyes. Rinse thoroughly. Use morning and night.

## Artistry™ Youth Xtend Softening Lotion

Refine the surface of your skin with this milky Softening Lotion.

- Lightweight, milky liquid refines the surface of your skin, and prepares skin for treatment.
- Its key ingredient, Japanese Lilyturf strengthens the Tight Junction, part of the skin that helps seal in the skin's natural hydration.
- Leaves skin feeling soft, smooth and instantly hydrated.



**Recommended Usage:** After cleansing, splash product onto palm or cotton pad and gently pat over the entire face and neck.

200 ml  
SKU #113802  
SRP: 2,670.00  
P3933B1835Y20552





ARTISTRY™ SKIN CARE: Youth Xtend Collection



## Artistry™ Youth Xtend Enriching Lotion

Revitalize skin with this luxurious, moisturizing formula which is packed with hydrating ingredients that make skin smoother, more radiant, and noticeably softer.

- Works overnight, non-greasy.
- Repairs existing damage as it boosts collagen for a reduced appearance of fine lines and wrinkles.
- Skin looks plumper and refreshed.
- Lighter formula suitable for normal/combination skin.

50 ml  
SKU #113804  
SRP: 3,850.00  
P5673B2645Y29602



**Recommended Usage:** Apply in upward strokes over face and neck. Use at night time.

## Artistry™ Youth Xtend Enriching Cream

This luxurious, moisturizing formula is packed with hydrating ingredients that make skin smoother, more radiant and hydrated.

- With African Baobab fruit extract which helps condition and soothe skin.
- Has an exclusive Micro-X6 Peptide to repair existing damage as it boosts collagen for a reduced appearance of fine lines and wrinkles.
- Improves skin moisturization and smoothness.
- Contains Mediterranean botanical to reprogram the future of skin.
- Formula specifically developed for normal to dry skin.



**Recommended Usage:** Apply in upward strokes over face and neck each evening.



50 ml  
SKU #113808  
SRP: 3,850.00  
P5673B2645Y29602

## Artistry™ Youth Xtend Enriching Eye Cream



This ultra-rich moisturizing formula noticeably diminishes the appearance of fine lines and wrinkles around the eye area. Proven ingredients simultaneously help reveal vibrant, refreshed, younger-looking eyes.

- Targets the first signs of aging in the eye area.
- Improves under eye puffiness and dark circles.
- Safe for all skin types.
- Non-irritating and gentle.

15 ml  
SKU #113810  
SRP: 2,750.00  
P4049B1890Y21152



**Recommended Usage:** Lightly dab a small amount under and around the eye area.



50 ml  
SKU #113807  
SRP: 3,665.00  
P5404B2520Y28202

## Artistry™ Youth Xtend Protecting Cream

Daytime moisturizing cream with SPF 15 that helps protect skin from UV damage and combines powerful ingredients including African Baobab fruit extract, Green Acerola Cherry and Black Currant that provide comprehensive antioxidant protection.

- This advanced hydrating formula helps prevent the appearance of fine lines and wrinkles.
- Daily use improves skins smoothness, radiance, clarity and provides all day moisture.
- Ideal for Normal-to-Dry skin.



**Recommended Usage:** Apply Protecting Cream gently over face and neck for broad sun-protection coverage each morning. Follow with daily foundation.

## Artistry™ Youth Xtend Protecting Lotion

Lightweight daytime moisturizing lotion with SPF 15 that helps protect skin from UV damage and combines powerful ingredients including African Baobab fruit extract, Green Acerola Cherry and Black Currant that provide comprehensive antioxidant protection.

- This advanced hydrating formula helps prevent the appearance of fine lines and wrinkles.
- Daily use improves radiance, clarity and provides all day moisture.
- Ideal for Normal-to-Combination skin.



**Recommended Usage:** Apply over face and neck for full sun-protection coverage each morning. Follow with daily foundation.

50 ml  
SKU #113803  
SRP: 3,665.00  
P5404B2520Y28202



## Artistry Exact Fit™ Powder Foundation

Artistry Exact Fit™ Powder Foundation contains the Artistry Exact Fit™ Blend finely balanced with Tahitian Pearls and Optical Prisms for a natural matte finish look leaving skin velvety soft plus rare Amazonian minerals that helps control oil and shine for a coverage that lasts, even in heat and humidity.

- Medium, buildable coverage.
- Suitable for all skin types and sensitive skin.
- Allergy and dermatologically tested, non-comedogenic.
- Oil-free and fragrance-free.
- SPF 20 UVA/UVB PA +++ - for sun protection.



### Recommended Usage:

- Apply thin layer powder using a sponge or brush sponge.
- Choose the side based on the look you want to achieve.
- Velvet-like side gives sheer-to-medium coverage.
- Sponge side deposits more powder for the most coverage.
- For areas requiring more coverage, repeat to apply more foundation.



L1N1 Bisque Refill  
SKU #116725



L2N2 Natural Refill  
SKU #116730

12 g  
SRP: 1,370.00  
P1882B94Y10552

Powder Foundation/Pressed Powder Applicator  
SKU #116104  
SRP: 50.00

Powder Compact  
SKU #116745  
SRP: 900.00  
P444B214Y7202  
*\*Container only*



## MIYU 3in1 Whitening Cleanser

### FREE ME UP

Wash away the day's dirt and pollutants with a cleanser that is enriched with buckwheat sprout to naturally brighten and even out your skin!

- Buckwheat sprout is an anti-inflammatory that is clinically proven to brighten skin.
- Leaves skin clean, healthy, hydrated and radiant.
- Hypo-allergenic and free of dyes.

100 ml  
SKU #274128  
SRP: 499.00  
P713B356Y3992



**Recommended Usage:** Wet face and hands with warm water. Squeeze a small amount of cleanser into palm and work into a lather. Massage gently over face and neck, avoiding eye area. Rinse thoroughly and follow with toner and moisturizer.

## MIYU 3in1 Whitening Toner

### PORE ME DOWN

Enriched with chaga mushroom and buckwheat extract, this toner combines two powerful ingredients to tighten pores and whiten the skin.

- Chaga glycoprotein controls excess sebum and has pore-tightening properties.
- Buckwheat extract has been proven to naturally whiten and give a fairer complexion.
- Removes dead skin cells.



**Recommended Usage:** After cleansing, apply on cotton pad and gently pat over the entire face and neck. Follow with moisturizer.

150 ml  
SKU #274129  
SRP: 699.00  
P982B490Y5492



## MIYU 3in1 Whitening Moisturizer SPF30 PA++

### EASY PEASY BABY

Get an instant matte finish and a luminous glow while protecting your skin from harmful UVA and UVB rays.

- Formulated with SPF30 PA++
- Lightweight formula that instantly whitens and moisturizes the skin.

50 ml  
SKU #274130  
SRP: 749.00  
P1072B535Y5992



**Recommended Usage:** After toner, smooth gently over face and neck. Avoid eye area.

## Glister™ Multi-action Fluoride Toothpaste

**MULTI-ACTION AND REMINERALIZATION**



65 g  
SKU #E1959  
SRP: 175.00  
P239B120Y1352



200 g  
SKU #E6833  
SRP: 345.00  
P445B235Y2652

Contains REMINACT™ formula that helps redeposit essential minerals back into the enamel through remineralization to make teeth stronger and more decay-resistant. This effective decay preventing toothpaste proactively keeps your teeth and gums clean and fight five dental health problems:

- Removes plaque
- Prevents cavities
- Whitens teeth without bleaching
- Freshens breath
- Eliminates stains
- Safely cleans, allergy-tested


 **Recommended Usage:** Put a ribbon of toothpaste along the head of the toothbrush.

## Glister™ Advanced Toothbrush

**2,670 BRISTLES ON AVERAGE**

Its uniquely-designed handle and head gives you a combination of soft and medium bristles for better cleaning, and anchorless technology gives 75% more bristles to make it easier to access hard-to-reach places.

- Flexible neck that reduces pressure on teeth and gums.
- Interdental bristles that effectively clean between the teeth and the gumline.
- Non-slip grip for better control.

 **Recommended Usage:** Place a ribbon of toothpaste along the brush head and place the toothbrush at a 45-degree angle to the gums and begin using short back and forth strokes. Brush the tongue to remove bacteria and keep your breath fresh.

4 pcs/pk  
SKU #100957  
SRP: 760.00  
P1055B520Y5852





## Glister™ Concentrated Anti-Plaque Mouthwash

### ECONOMICAL PLAQUE FIGHTER

This concentrated formula freshens your breath and helps destroy more plaque that brushing alone cannot remove.

- Contains cetylpyridinium chloride (CPC), a proven plaque-fighting ingredient.
- Has an appealing minty flavor
- Helps kill plaque bacteria that causes bad breath
- Over 100 uses per bottle, if used as directed.



**Recommended Usage:** Dispense five pumps of the concentrate into the plastic cup and fill to the one ounce line with water.

50 ml  
SKU #E9949  
SRP: 570.00  
P786B395Y4402



## Glister™ Mint Refresher Spray

### ON-THE-GO FRESH BREATH WITH NO CALORIES

Prevent plaque buildup and get instantly fresh breath with this long-lasting, convenient, and sugar-free alternative to gum and mints.

- Characteristic mint and menthol odor.
- Comes in a convenient, easy to carry size.
- Allergy-tested.



**Recommended Usage:** Pull the cap straight up to avoid breaking the spray tip, hold container upright and spray directly into the mouth.

14 ml  
SKU #120351  
SRP: 295.00  
P415B201Y2252

PERSONAL CARE

## G&H™ NOURISH+ Body Wash

### CLEANSES AND PROTECTS

Indulge in a luxurious, lightly scented body wash from head to toe everyday. Formulated with special Honey, Shea Butter and organic Pumpkin Seed Oil. G&H Nourish Body Wash gently cleanses, leaving skin feeling hydrated and nourished.

- Goes beyond cleansing to help relieve and soothe dry skin.
- Formula contains anti-irritation complex
- Dye and sulfate-free
- Dermatologist and allergy tested.
- Biodegradable formula



400 ml  
SKU #118107  
SRP: 605.00  
P856B415Y4652



**Recommended Usage:** Dispense a suitable amount into the palm of one hand or directly onto a washcloth/sponge. Massage into a lather, smooth over skin and rinse.

BEAUTY AND PERSONAL CARE

36

## G&H™ NOURISH+ Complexion Bar



3 bars/pk  
SKU #118112  
SRP: 555.00  
P786B380Y4252

Experience G&H™ Nourish+ Complexion Bar, a gentle and translucent bar formulated with Orange Blossom Honey, Shea Butter and organic Pumpkin Seed Oil that leaves skin clean, smooth and soft. Although made primarily for facial cleansing, it's also an excellent bath soap.

- Enriched with natural glycerin and blended with natural honey
- Benefits of honey:
  - It is a natural humectant
  - Natural anti-bacterial properties
  - Contains Vitamin B6, Vitamin C, Thiamin, Riboflavin and Niacin
  - Contains antioxidants and amino acids
- Suitable for all skin types (dry, normal, oily)
- Unique 'breakaway' design - allows you to create three facial bars or one facial and two bath bars
- Dermatologist and allergy tested.
- Biodegradable formula



**Recommended Usage:** Rub into the palm of one hand or directly onto a washcloth/sponge, smooth over skin and rinse

PERSONAL CARE



## G&H™ REFRESH+ Body Milk

### MOISTURIZES AND REFRESHES

400 ml  
SKU #118104  
SRP: 580.00  
P795B397Y4452

Indulge in a lightweight and fast-absorbing body milk to refresh and moisturize skin for up to 24 hours with G&H™ Refresh Body Milk. Formulated with Aloe, Grapeseed Extract and Green Tea Extract and carefully balanced to deliver a refreshing experience while also soothing skin.

- Suitable for use by the whole family.
- Dermatologist and allergy tested.
- Developed to be gentle and healthy for the environment.



**Recommended Usage:** Pump the desired amount onto hands. Massage into skin until absorbed. Use daily or as often as desired.

## G&H™ PROTECT+ Bar Soap

### REPLENISHES AND PROTECTS

Formulated with White Tea, Natural Minerals and Bilberry extract, G&H Protect+ Bar Soap thoroughly cleanses and protects skin's natural moisture balance to leave skin looking healthy and feeling soft, smooth, and conditioned.

- Clean-scented, non-drying white bar soap with exclusive Fragrance Malodor Technology that helps protect the skin against body odor.
- Triclosan/Triclocarbon-free formula that effectively protects from germs and removes dirt, oil, and impurities.
- Suitable for the whole family.
- Dermatologist and allergy tested.
- Biodegradable formula



6 x 150 g bars  
SKU #118116  
SRP: 1,335.00  
P1885B915Y10252



**Recommended Usage:** Wet the bar, then massage over skin to create lather. Rinse. When one bar is almost finished, use the clever SoapSaver feature to fuse it with your new bar.

## G&H™ PROTECT+ Deodorant & Anti-Perspirant Roll-On

### 48 HOUR ODOR AND WETNESS PROTECTION



100 ml  
SKU #118120  
SRP: 345.00  
P475B237Y2652

Formulated with White Tea, Natural Minerals and Bilberry extract, G&H Protect+ Roll On is a clear, fast-drying antiperspirant and deodorant that gives up to 48 hours of odor and wetness protection, reduces irritation. Unisex formula with an exclusive, proven exclusive patented encapsulated fragrance that releases a fresh burst of fragrance when you move.

- Leaves the skin smelling fresh all day - but still mild and gentle.
- Formulated to help reduce the irritation that can cause the appearance of dark underarm marks.
- Won't leave white marks on skin or clothes.
- Dermatologist and allergy tested. Dye-free.



**Recommended Usage:** Remove cap. Turn bottle upside down. Glide the roller to dispense product onto clean, dry underarm skin. Allow the skin to dry before getting dressed.

PERSONAL CARE: Hair Care

## Satinique™ Smooth Moisture Shampoo

FOR DRY, UNRULY HAIR



Experience smoothness that endures, and moisture that revives you with a special formula of a botanical blend of kukui seed oil and pro-vitamin b5 that improves elasticity and rehydrates and protects hair.

- Restores lost moisture from root to tip.
- Transforms dull, dry, or unmanageable hair.
- Leaves hair up to six times smooth.
- Featuring ENERJUVE™, a patented complex composed of lipids, 18-MEA and creatine -- to restore hair to its natural, healthy-looking state.
- With kukui seed oil with rejuvenating and soothing effects that restores your hair's luster and elasticity.
- With Pro-Vitamin B5 used to keep your hair shiny and silky.

280 ml  
SKU #110655  
SRP: 460.00  
P684B315Y3552



Recommended Usage: Massage into a lather and apply to wet hair. Rinse.

## Satinique™ Smooth Moisture Conditioner

FOR DRY, UNRULY HAIR

Experience smoothness that endures, and moisture that revives you.

- Helps improve moisture from root to tip.
- Leaves hair up to six times smooth.
- Featuring ENERJUVE™, a patented complex composed of lipids, 18-MEA and creatine -- to restore hair to its natural, healthy-looking state.
- With kukui seed oil with rejuvenating and soothing effects that restores your hair's luster and elasticity.
- With Pro-Vitamin B5 used to keep your hair shiny and silky.



Recommended Usage: Massage into a lather and apply to wet hair. Rinse.

280 ml  
SKU #110664  
SRP: 460.00  
P684B315Y3552



## Satinique™ 2 in 1 Shampoo & Conditioner

FOR ALL HAIR TYPES

Experience the ease of healthy looking hair by simplifying your haircare routine with Satinique 2 in 1 Shampoo and Conditioner.

- Leaves hair soft, healthy-looking and easy to comb.
- Featuring ENERJUVE™, a patented complex composed of lipids, 18-MEA, and creatine that restores hair to its natural, healthy-looking state.
- With Borage Seed Oil or starflower, an annual herb that is used to repair and moisturize hair because of its ability to lock in moisture and smoothen the outer cuticle.
- With Vitamin E, an antioxidant that moisturizes and protects hair.

280 ml  
SKU #115304  
SRP: 565.00  
P833B390Y4352



Recommended Usage: Massage into a lather and apply to wet hair. Rinse.

## Satinique™ Glossy Repair Shampoo

FOR DAMAGED, COLOR-TREATED HAIR

Gently cleanses hair while repairing and maintaining hair color and boosts shine.

- Keeps hair color for up to 45 washes.
- Strengthens hair for up to six times.
- A sulfate-free formula designed for color-treated hair.
- Featuring with ENERJUVE™, a patented complex composed of lipids, 18-MEA, and creatine that restores hair to its natural, healthy-looking state.
- Contains a unique blend of Vitamin E, Pomegranate and Grape Seed extract, which helps to protect hair from UV damage and styling aggressions.



280 ml  
SKU #110663  
SRP: 565.00  
P833B390Y4352



**Recommended Usage:** Massage into a lather and apply to wet hair. Rinse.

## Satinique™ Glossy Repair Conditioner

FOR DAMAGED, COLOR-TREATED HAIR



The Satinique Glossy Repair System provides gentle cleansing and conditioning to protect, strengthen and repair hair whilst helping to maintain dyed hair colour and boost shine.

- Strengthens hair up to six times.
- Keeps colour truer, longer for up to 45 washes.
- Sulfate-free formula specially designed for colour treated hair, with a botanical blend of pomegranate and grape seed extracts that helps revitalise dull, dry hair as it protects hair from environmental pollution and chemicals.
- Featuring ENERJUVE™, a patented complex composed of lipids, 18-MEA and creatine – to restore hair to its natural, healthy-looking state.
- Contains a unique blend of Vitamin E, Pomegranate and Grape Seed extract, which helps to protect hair from UV damage and styling aggressions.

280 ml  
SKU #110671  
SRP: 565.00  
P833B390Y4352



**Recommended Usage:** Massage into a lather and apply to wet hair. Rinse.

## Satinique™ Anti-Dandruff Shampoo

FOR REDUCING DANDRUFF AND PROVIDING MOISTURE

With its botanical blend of avocado and vitamin E, Satinique Anti-Dandruff Shampoo helps moisturize, protect hair, and reduce dandruff as well as relieve dry, itchy scalp.

- Helps eliminate flakes and control dandruff.
- Featuring ENERJUVE™, a patented complex composed of lipids, 18-MEA, and creatine that restores hair to its natural, healthy-looking state.
- With Vitamin E and a unique ingredient from Avocado, the formula helps nourish and moisturize the scalp.
- With Zinc Pyrithione that relieves dry and itchy scalp.



280 ml  
SKU #110670  
SRP: 535.00  
P833B365Y4102

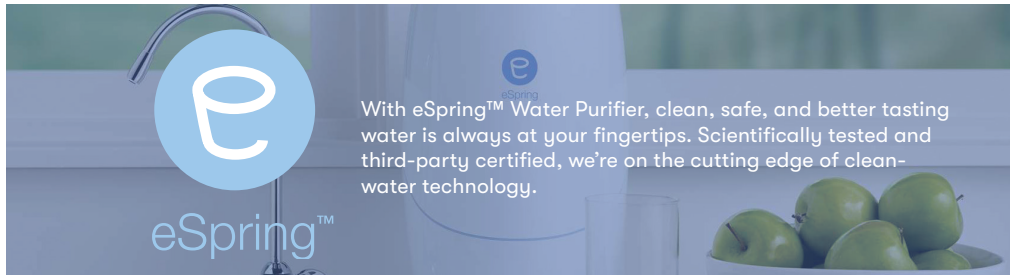


**Recommended Usage:** Massage into a lather and apply to wet hair. Rinse.



# Home Living

We improve everyday life through technology. From water purification technology to cleaning solutions, Amway brings scientific advancements to your home.



With eSpring™ Water Purifier, clean, safe, and better tasting water is always at your fingertips. Scientifically tested and third-party certified, we're on the cutting edge of clean-water technology.



### RIGOROUSLY TESTED, INTERNATIONALLY CERTIFIED

NSF International, the world's leading independent authority on water treatment, has tested eSpring™ and has certified that they meet the following standards:

- Standard 42 – Aesthetic Effects
- Standard 53 – Health Effects
- Standard 55 – Ultraviolet Microbiological Water Treatment
- Standard 401 – Emerging Contaminant



The eSpring brand has earned the Water Quality Association (WQA) Gold Seal for meeting industry standards.



From phosphate-free laundry detergent to environmentally sensitive cleaning products, Amway Home™ products are safe for the whole family. **Better. Naturally.**



Our products are powered by BIOQUEST Formula™ which delivers effective cleaning performance, concentrated, dermatologist-tested and biodegradable.



Most Amway Home™ products are certified for a safer clean that is powerfully green. Safer Choice label promotes products with safer chemical ingredients for us and the environment without sacrificing quality and performance.



We're into eco-friendly packaging.



1 L  
SKU #E0001  
SRP: 415.00  
P571B285Y3202

## Amway Home™ L.O.C.™ Multi-Purpose Cleaner

Use our most versatile cleaning product - gentle enough to use to tackle all washable surfaces like floors, bathroom, kitchen and woodwork.

- Works on all washable items and surfaces, even your hands.
- Effective and mild enough for use as a gentle hand cleanser.
- Concentrated
- Biodegradable formula
- Dermatologist-tested
- Safe for the environment



### Recommended Usage:

- Add 30ml of the product to five liters of water in a bucket.
- Wash surfaces, and dry as needed. No rinsing required.
- Using the Amway Home™ Pistol Grip Sprayer bottle, add water to the 450ml line, then add product to the 500ml line. Spray and white dry.
- For washing hands, use full strength. Rub in well and rinse off.

## Amway Home™ Dish Drops™ Concentrated Dishwashing Liquid

It is concentrated and powerful enough to easily get rid of grease and even dried-on mess but safe and gentle to the skin that you can even use it to wash or soak fruits and vegetables.

- With aloe vera and shiso extract to soothe hands
- Leaves dishes sparkling and hygienically clean
- Cleans and removes dirt from fruits and vegetables
- Concentrated
- Biodegradable formula
- Dermatologist-tested
- Safe for the environment



### Recommended Usage:

If using a sponge:

- Dilute one part with one-five parts of water into the Amway Home™ Squeeze Bottle.
- Squeeze a small amount of this solution on the sponge.
- Wash the dishes, then rinse with water.

If washing in sink/basin:

- Fill the sink or basin with five liters of warm water.
- Add 3ml (equal to one full dispenser pump) of DISH DROPS Concentrated Dishwashing Liquid. Wash the dishes, then rinse with water.

If you wash vegetables/fruits:

- Dilute 1ml of product in five liters of water, soak the vegetables or fruits in for a few minutes (no more than 5 minutes).
- To control unpleasant drain odors, add 1/4 cup full or 2 pumps to drain and flush with hot running water.
- Rinse well.



1 L  
SKU #110488  
SRP: 655.00  
P932B451Y5052



1 kg  
SKU #109848  
SRP: 820.00  
P1118B565Y6302

## Amway Home™ SA8™ Premium Concentrated Laundry Detergent

Keep your clothes looking and smelling fresh! Enjoy quality cleaning action and exploding crystals that dissolve fast and rinse away completely.

- Leaves no irritating residue, even in cold water
- Biodegradable formula
- Dermatologist-tested
- Safe for the environment



### Recommended Usage:

- Sort clothes by colour, fabric and degree of soil.
- For best results, use the warmest temperature recommended for fabric and colours.
- Use the amount indicated on the chart as seen on packaging. For heavily-soiled laundry, hard water or reused water, use 50% more.

## Amway Pursue™ Disinfectant Cleaner

Cleans, disinfects and deodorizes in one step! Effectively cleans and disinfects different surfaces without rinsing or wiping needed.

- Acts as a disinfectant, cleaner, sanitizer, fungicide, mildewstat, virucide and deodorizer for home, hospital, institutional and industrial use.
- Prevents mold and mildew
- Concentrated
- Phosphate-free



### Recommended Usage:

- Add ½ capful per liter water.
- Apply the solution to hard, non-porous surfaces with a cloth, mop, sponge, sprayer or by immersion. Treated surfaces must remain wet for ten minutes. Allow the surface to air-dry for a couple more minutes or wipe it dry with a cloth, sponge or a mop.
- For heavily-soiled areas, a preliminary cleaning is recommended.



1 L  
SKU #E3878  
SRP: 585.00  
P807B400Y4502

HOME CARE - Dispenser



**Amway Home™  
Pump Dispenser**

SKU #103972  
SRP: 65.00

Make dispensing easy and right. Just attach to any one liter bottle of Amway Home™ concentrated products for a more reliable and consistent portion control.

**Amway Home™  
Pistol Grip Sprayer**

Clean is just a spray away! Use this to dilute and dispense any Amway Home™ concentrated cleaning products and water. Just twist the adjustable nozzle so you can choose either a fine mist or foam function.



500 ml  
SKU #110483  
SRP: 125.00



**Amway Home™  
Squeeze Bottle**

500 ml  
SKU #110487  
SRP: 70.00

Use this for all your daily home cleaning needs. Just flip, squeeze and pour!

## eSpring™ Water Purifier

Enjoy clean water without the worry! This in-home water treatment system, with a filter cartridge that incorporates a patented carbon block filter and uses "Instant On" technology UV lamp, reduces potential health effect contaminants yet allowing beneficial minerals like calcium and magnesium to pass through. This unit comes with the eSpring™ Diverter Kit for quick connection to your existing faucet.

**With 2-year warranty**  
SKU #100188  
SRP: 65,250.00  
P97126B44814Y501902

**With 5-year warranty**  
SKU #263133  
SRP: 68,285.00  
P97126B46898Y525252



## eSpring™ UV Carbon Cartridge

Convenient and easily replaceable carbon/UV cartridge with "Smart Chip" that allows for wireless communication to individual cartridges, allowing the monitor to recognize and display operation conditions. Recommended to be replaced every 5,000 liters or one year whichever comes first.



SKU #100186  
SRP: 10,170.00  
P15139B6985Y78252

## eSpring™ Pleated Prefilter

Protect your eSpring™ UV Carbon Cartridge from premature clogging with this removable outer prefilter. It increases the sediment removal surface allowing it to be more effective at reducing contaminants. Recommended to be replaced when necessary.

SKU #100187  
SRP: 2,560.00  
P3808B1757Y19702



HOME LIVING





## eSpring™ Wall-Mount Bracket Kit

Give your kitchen sink a clean, professional look plus save counter space by fixing your eSpring™ Unit on your wall using this tool set.

SKU #102996  
SRP: 5,115.00  
P7614B3513Y39352



## eSpring™ Auxiliary Faucet

Create more space on your kitchen sink! Convert your eSpring™ countertop unit to a below countertop (installed under the sink) with the eSpring™ Auxiliary Faucet. Now, ergonomically improved with a durable yet easy-to-grasp handle for everyone in the family.

*Note: Installation services for this accessory is not provided. Please consult a professional plumber.*

SKU #100663  
SRP: 12,990.00  
P19335B8921Y99902



## eSpring™ Tubing

Your eSpring™ Unit is connected to your existing faucet via tubing. Replacing this at least every two years or earlier is recommended.

SKU #400585  
SRP: 310.00



# Energy

XSTM products strive to provide people with great flavor and adventure fuel – our XSTM Energy Drinks are the first exclusively sugar-free drink brand sold globally\* and provides the best combination of flavor and function for the moments you need it, in the ways you can feel.

XSTM is more than a brand, a collection of products, or even a lifestyle. It's an adventure waiting to happen. It's fuel to help you and your community achieve more every single day. Bring the Laguna Beach lifestyle with you wherever you go, whether you're pursuing adventure outdoors or competing for a promotion at work, and share it with those around you. XS Nation's active, motivated community will propel you forward. Live adventurously with XS.



\*SOURCE: Euromonitor International Limited, 2017.

ENERGY



XS™ Energy Drinks

A great-tasting, sugar-free energy drink that packs a powerful punch of energy with a tasty flavor.

Contains B Vitamins, L-Carnitine, L-Glutamine and Taurine.

Cranberry-Grape Flavor

250 ml  
SKU #289671  
SRP: 99.00  
P134B67Y752

Citrus Flavor

250 ml  
SKU #289674  
SRP: 99.00  
P134B67Y752

ENERGY

47



XS™ Rhodiola 110

PREPARE TO PERFORM.

60/bottle  
SKU #101593  
SRP: 1,715.00  
P2361B1180Y13202

Contains a natural blend of herbs – Rhodiola Rosea, Green Tea Extract, Acerola Concentrate and Spinach Dehydrate to enhance performance and combat stress.



Recommended Usage: One tablet before physical activity. Do not exceed one tablet per day.

PRODUCT CATALOGUE



# Agriculture

We provide the needs of our farmers to supply the required nutrition for their crops and eventually produce bountiful and quality harvest with our AMWAY Seven Wonders of Agriculture line.

## REMINDERS

When spraying pesticides or fertilizers mixed with APSA-80; schedule it on times when the sunlight is not that intense; either very early in the morning or late in the afternoon.

Other inputs such as pesticides can be mixed to be applied simultaneously with Nutriplant™ agriculture product to save time and labor. Make sure to follow the instructions on the labels to ensure safety and effectiveness of the products.

To have a good result on the application of the mixtures with Amway Nutriplant™ Products, you can first conduct a trial area in a small part of your farm (eg. 100 m<sup>2</sup>) before applying the mixtures to the whole farm to make sure that there will be no adverse effect that may happen due to wrong mixtures of inputs, wrong timing, and other reasons.

## NOTE TO USERS AND BUYERS OF AMWAY NUTRIPLANT™ SEVEN WONDERS OF AGRICULTURE PRODUCTS



The use and selling of Amway Agriculture products has been approved by the Fertilizer and Pesticide Administration (FPA), a government agency duly mandated to rationalize the manufacture and marketing of fertilizer; protect the public from the risks inherent in the use of pesticides; and educate the agricultural sector in the use of these inputs. FPA registration information of each product can be seen on their labels.

Amway Business Owner (ABO) should have an FPA Accredited Safety Dispenser License when selling or distributing Amway Agriculture Products



## APSA-80™ All Purpose Spray Adjuvant Concentrate

An all-purpose spray adjuvant concentrate for plants and crops, which maximizes performance and functions as an activator and spreader for herbicides, insecticides, fungicides and foliar fertilizers. It functions as an activator because of its wetting action, as a spreader to improve coverage, and is environment-friendly.

### BENEFITS

- Provides more uniform spray deposit on plants
- Improves coverage of herbicide and fungicide sprays
- Helps improve performance of post emergent herbicides, insecticides and fungicides

### FEATURES

- Has the most advance technology for surfactant and adjuvant
- Highly biodegradable and non-corrosive
- 100% Customer Satisfaction Guarantee

### INGREDIENTS

- Contains 80% non-ionic surfactant (Alkyl Aryl Alkoxylate)
- Has Tall Oil Free Fatty Acid

### USAGE

- Shake well before using.
- With herbicide: 175 –350 ml per hectare or 3-16 ml per 16 L of water
- With insecticide and fungicides: 3 –6 ml per 16 L water
- With foliar fertilizer: 3 –6 ml per 16 L of water

FPA Product Registration: 1-5IF-045



250 ml  
SKU #201931  
SRP: 280.00  
P362B192Y2152



1L  
SKU #E3417  
SRP: 1,075.00  
P1387B737Y8252

## Nutriplant AG

A plant growth enhancer for agricultural crops. This liquid concentrate is developed using a unique and proprietary multi-stage process to improve nutrient uptake, translocation and elicitor effects. It optimizes gene expression, helps in overcoming stress, and promotes nutrient uptake and performance.

### BENEFITS

- Reduces negative effects of abiotic stress of heat, freezing and drought
- Reduces the effects of free radicals for better shelf life
- Improves uptake of nutrients through the root system
- Improves crop yield and quality

### FEATURES

- Has MAC (Metabolically Active Compound) Technology
- Has essential nutrients, antioxidant activity, bio stimulant properties & full spectrum macro/micro analysis.
- Absorbed 100% within 4 hours of application.
- 100% Customer Satisfaction Guarantee

### INGREDIENTS

- Has Ascophyllum nodosum, seaweed from the Antarctic
- Has plant extracts and metabolites
- Has 11 essential micro and macro nutrients

### USAGE

- Shake well before using.
- Use in conjunction with a normal fertilizer program.
- Applicable to all kinds of crops
- 100 ml per 16 L of water
- 1 L per 1 Hectare

FPA Product Registration: 1-1F-912



1 L  
 SKU #232053  
 SRP: 1,560.00  
 P2365B1200Y12002



250 ml  
 SKU #232052  
 SRP: 430.00  
 P654B332Y3302



## Nutriplant N-P-K+

A foliar nutritional supplement developed through unique and proprietary multi-stage process to supply plants with Nitrogen, Phosphorus and Potassium for maintenance or to correct deficiencies quickly. It optimizes gene expression, helps in overcoming stress, and promotes nutrient uptake and performance.

### BENEFITS

- Supplies Nitrogen, Phosphorus and Potassium during critical stages of plant development
- Improves uptake of nutrients through the root system
- Improves crop yield and quality

### FEATURES

- Has MAC (Metabolically Active Compound) Technology
- 100% water soluble
- 100% readily available to the plant
- Quickly absorbed by the plant
- 100% Customer Satisfaction Guarantee

### INGREDIENTS

- Has *Ascophyllum nodosum*, seaweed from the Antarctic
- Has plant extracts and metabolites
- Has Nitrogen, Phosphorus, and Potassium

### USAGE

- Shake well before using.
- Use in conjunction with a normal fertilizer program.
- 100 ml per 16 L of water
- 1 L per 1 Hectare

FPA Product Registration: 1-11F-2674



1 L  
 SKU #235540  
 SRP: 1,730.00  
 P2625B1330Y13302

## Nutriplant SL

A nutritional supplement in liquid form which contains nutrients essential for seed germination and root growth. It optimizes gene expression, helps in overcoming stress, and promotes nutrient uptake and performance.

### BENEFITS

- Promotes quicker germination
- Supports larger root system
- Improves uptake of nutrients through the root system
- Improves crop yield and quality

### FEATURES

- Has MAC (Metabolically Active Compound) Technology
- Has secondary macronutrients and micronutrients
- 100% Customer Satisfaction Guarantee

### INGREDIENTS

- Has Ascophyllum nodosum, seaweed from the Antarctic
- Has plant extracts and metabolites
- Contains 8 nutrients

### USAGE

- Shake well before using.
- 2 ml diluted with 1 L of water per 1 Kg of seed
- Apply by soaking or spraying directly to seeds or cuttings

FPA Product Registration: 1-1IF-2355



250 ml  
SKU #231960  
SRP: 905.00  
P1370B695Y6952

## Nutriplant SD

A powder nutritional supplement which contains organically complexed micronutrients to enhance seedling emergence and plant growth. It optimizes gene expression, helps in overcoming stress, and promotes nutrient uptake and performance.

### BENEFITS

- For better crop stand
- Promotes faster seed germination
- Improves uptake of nutrients through the root system
- Improves crop yield and quality

### FEATURES

- Has MAC (Metabolically Active Compound) Technology
- 100% Customer Satisfaction Guarantee

### INGREDIENTS

- Has Ascophyllum nodosum, seaweed from the Antarctic
- Has plant extracts and metabolites
- Has 9 organically complexed nutrients

### USAGE

- 135 g per 18 kg of corn seed
- 100 g per 40 kg of rice seeds
- 45 g per 1 kg tomato seeds
- 6 g per 1 kg cabbage and leafy vegetables
- 2.5 g per 1 kg of soybean and other legume seeds

FPA Product Registration: 1-1IF-937



150 g  
SKU #EE0180  
SRP: 415.00  
P638B320Y3202

## Nutriplant K+

A supplemental foliar fertilizer which is developed through unique and proprietary multi-stage process to supply plants with readily available Potassium for maintenance or to correct deficiencies quickly. It optimizes gene expression, helps in overcoming stress, and promotes nutrient uptake and performance.

### BENEFITS

- Less susceptible to disease and insect resistance
- Promotes firm stem and stalks
- Increase plumpness of grains and seeds
- Improves uptake of nutrients through the root system
- Improves crop yield and quality

### FEATURES

- Has MAC (Metabolically Active Compound) Technology
- Has 25% Potassium content
- 100% available to plants
- 100% water soluble
- 100% Customer Satisfaction Guarantee

### INGREDIENTS

- Has Ascophyllum nodosum, seaweed from the Antarctic
- Has plant extracts and metabolites
- Has Potassium that enhances fruit quality of crop for a bountiful and quality produce.

### USAGE

- Used during flowering or reproductive stage of the crop
- Shake well before using.
- Use in conjunction with a normal fertilizer program.
- 100 ml per 16 L of water
- 1.6 L per 1 Hectare

FPA Product Registration: 1-1F-2700



1 L  
 SKU #236860  
 SRP: 2,295.00  
 P3479B1765Y17652

54 AGRICULTURE

54

## Nutriplant Zn+

A liquid foliar fertilizer developed using a unique and proprietary multi-stage process to supply plants with Zinc for maintenance or to correct deficiencies quickly. It optimizes gene expression, helps in overcoming stress, and promotes nutrient uptake and performance.

### BENEFITS

- Promotes more uniform maturity of plants.
- Promotes better absorption and translocation
- Increases grain formation and leaf size
- Improves uptake of nutrients through the root system
- Improves crop yield and quality

### FEATURES

- Has MAC (Metabolically Active Compound) Technology
- Organically chelates/complexes
- 100% available to the plant
- 100% water soluble
- 100% Customer Satisfaction Guarantee

### INGREDIENTS

- Has Ascophyllum nodosum, seaweed from the Antarctic
- Has plant extracts and metabolites
- Has Zinc which is needed for production of plant hormones and protein synthesis

### USAGE

- Shake well before using.
- Use in conjunction with a normal fertilizer program
- 100 ml per 16 L of water.
- 1.6 L per 1 Hectare

FPA Product Registration: 1-1F-2701



1 L  
 SKU #236862  
 SRP: 2,295.00  
 P3479B1765Y17652

# Achievers

Amway Philippines partners with Figaro House of Coffee to offer you premium coffee and cocoa goodness in a cup.

## Achievers Coffee Mix

From the Figaro Coffee House of fine coffee, comes Achievers Coffee. Made from carefully selected coffee beans, you can instantly prepare an excellent cup of coffee goodness. Savor and enjoy its rich taste and enticing aroma!

### Recommended Usage:

- Pour the sachet's contents into a cup.
- Mix in 180 ml of hot water stir and enjoy.



20 g x 10 sachets  
SKU #241235  
SRP: 250.00  
P197B85Y1902



25 g x 10 sachets  
SKU #246496  
SRP: 350.00  
P299B129Y2902

## Achievers Premium Cocoa Mix

From Amway, in partnership with Figaro Coffee House, comes Achievers Premium Cocoa [Tablea] Mix. Made from carefully selected cocoa beans, you can instantly prepare an excellent cup of chocolate goodness. Savor and enjoy its rich and enticing taste!

### Recommended Usage:

- Pour the sachet's contents into a mug.
- Add 150 ml hot water.
- For iced chocolate – dissolve first in small amount of hot water then add water & ice.
- Stir well & serve.